

Appendix A

Utilities located within the proposal area

THIS DRAWING MAY BE PREPARED IN COLOUR AND MAY BE INCOMPLETE IF COPIED

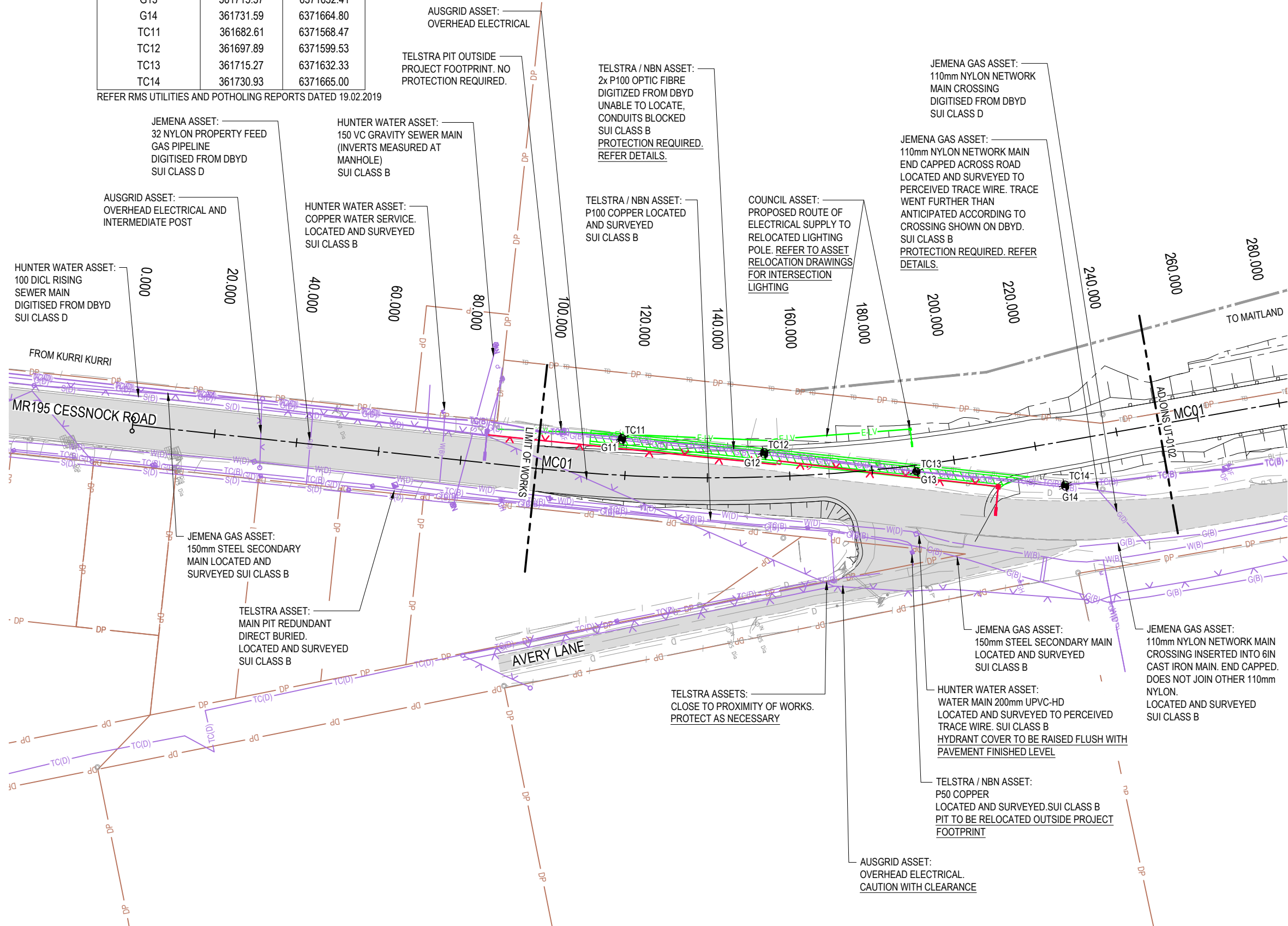
150mm ON A3 SIZE ORIGINAL



BOREHOLE LOCATION SCHEDULE

BORHOLE NUMBER	EASTING	NORTHING
G11	361683.12	6371568.15
G12	361698.54	6371599.22
G13	361715.37	6371632.41
G14	361731.59	6371664.80
TC11	361682.61	6371568.47
TC12	361697.89	6371599.53
TC13	361715.27	6371632.33
TC14	361730.93	6371665.00

REFER RMS UTILITIES AND POTHOLING REPORTS DATED 19.02.2019

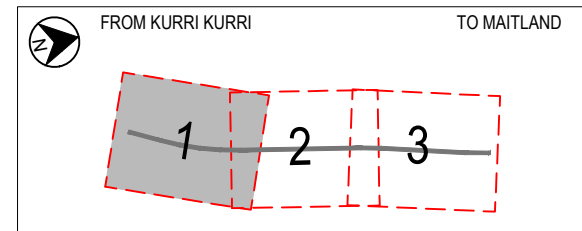


LEGEND

	EXISTING PAVEMENT
	EARTHWORKS AND GROUND INTERFACE
	NEW CADASTRAL BOUNDARY
CHARACTERS DENOTING UTILITY TYPE:	
TC: COMMUNICATIONS	
G: GAS	
E: ELECTRICITY (OVERHEAD ELECTRICITY SHOWN WITH LINETYPE SYMBOLOGY)	
W: WATER SUPPLY	
S: SEWER	
(QL-X) X DENOTES CLASSIFICATION OF SUB-SURFACE UTILITY INFORMATION STANDARD AS5488: QUALITY LEVEL D (QL-D), C (QL-C), B (QL-B), A (QL-A)	
	RETAIN EXISTING UTILITIES
	REMOVE EXISTING UTILITIES
	DESIGN UTILITIES
	UNDERGROUND UTILITY PROTECTION. REFER DETAILS IN RD DRAWING SERIES.

NOTES

- UTILITY INFORMATION SHOWN ON THE PLANS DOES NOT DEPICT ANY MORE THAN THE PRESENCE OF A SERVICE, BASED ON AVAILABLE DOCUMENTARY EVIDENCE. THE PRESENCE OF A UTILITY SERVICE, ITS SIZE AND LOCATION SHOULD BE CONFIRMED BY FIELD INSPECTION, PRIOR TO THE COMMENCEMENT OF ROADWORKS AND THE RELEVANT UTILITY PLANS OBTAINED BY DIALLING PH 1100 OR FAX 1300652 077 (DIAL BEFORE YOU DIG). CAUTION SHOULD BE EXERCISED WHEN WORKING IN THE VICINITY OF ALL UTILITY SERVICES.



KEY PLAN

N.T.S.

NOT FOR CONSTRUCTION

DRAWING FILE LOCATION \ NAME \\Jacobs.com\ANZ\IE\Projects\04_Eastern\1A182900-0000-CR-DRG-UT-0101-0103.dwg				PROJECT BREAKDOWN STRUCTURE		JACOBS DOCUMENT NUMBER 1A182900-0000-CR-DRG-UT-0101-0103		PLOT DATE / TIME 10/04/2019 4:09:14 PM		PLOT BY shail		CLIENT <div> Transport Roads & Maritime Services</div>		LGA178 - MAITLAND COUNCIL, LGA 186 - CESSNOCK COUNCIL MR195 CESSNOCK ROAD MAINTAIN ACCESS DURING FLOOD EVENTS GILLIESTON HEIGHTS (TESTERS HOLLOW) UTILITY COORDINATION PLAN LIMIT OF WORKS TO CH250		SHEET 1 OF 3		A3			
DESIGN MODEL FILE(S) USED FOR DOCUMENTATION OF THIS DRAWING				REV		DATE		AMENDMENT / REVISION DESCRIPTION		APPROVAL		SCALES ON A3 SIZE DRAWING		DRAWINGS / DESIGN PREPARED BY		TITLE		NAME		DATE	
DS2019/000008-DESI-DD100-190409				0		-		NOT ISSUED		-		<div>SCALE 1:1000</div> <div></div> <div>AT A3</div>		<div></div> <div>710 Hunter Street Newcastle West, NSW 2302 AUSTRALIA Tel: (02) 4979 2600 Fax: (02) 4979 2666 Web: www.jacobs.com</div>		DRAWN		J. PARISH		09.04.19	
				DRG CHECK		A. HYLAND		09.04.19													
				DESIGN		A. HYLAND		09.04.19													
DESIGN CHECK		T. McINTYRE		09.04.19		DESIGN MNGR		D. ARMSTRONG		09.04.19		PROJECT MNGR		J. MAGIN		09.04.19					
CO-ORDINATE SYSTEM MGA ZONE 56				HEIGHT DATUM AHD		RMS REGISTRATION No. DS2019/000008		ISSUE STATUS INFORMATION DOCUMENT		EDMS No. SF2013/166126		SHEET No. UT-0101		REV 2							

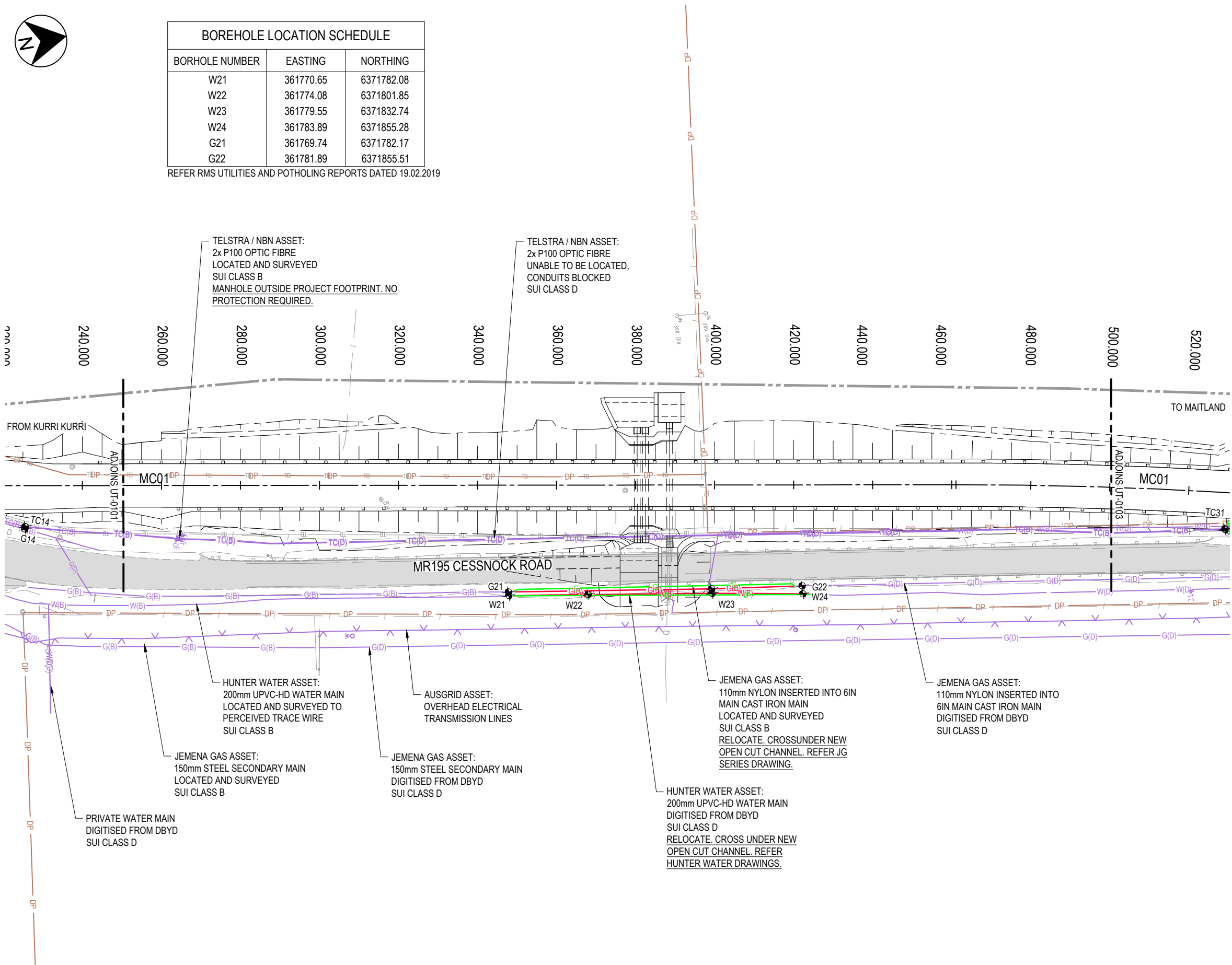


BOREHOLE LOCATION SCHEDULE		
BORHOLE NUMBER	EASTING	NORTHING
W21	361770.65	6371782.08
W22	361774.08	6371801.85
W23	361779.55	6371832.74
W24	361783.89	6371855.28
G21	361769.74	6371782.17
G22	361781.89	6371855.51

REFER RMS UTILITIES AND POTHOLING REPORTS DATED 19.02.2019

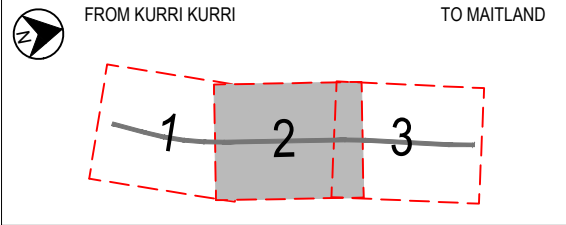
LEGEND

	EXISTING PAVEMENT
	EARTHWORKS AND GROUND INTERFACE
	NEW CADASTRAL BOUNDARY
CHARACTERS DENOTING UTILITY TYPE: W001 G001	
TC: COMMUNICATIONS	
G: GAS	
E: ELECTRICITY (OVERHEAD ELECTRICITY SHOWN WITH LINETYPE SYMBOLOGY)	
W: WATER SUPPLY	
S: SEWER	
(QL-X) X DENOTES CLASSIFICATION OF SUB- SURFACE UTILITY INFORMATION STANDARD AS5488: QUALITY LEVEL D (QL-D), C (QL-C), B (QL-B), A (QL-A)	
	RETAIN EXISTING UTILITIES
	REMOVE EXISTING UTILITIES
	DESIGN UTILITIES
	UNDERGROUND UTILITY PROTECTION. REFER DETAILS IN RD DRAWING SERIES.





NOTES

- UTILITY INFORMATION SHOWN ON THE PLANS DOES NOT DEPICT ANY MORE THAN THE PRESENCE OF A SERVICE, BASED ON AVAILABLE DOCUMENTARY EVIDENCE. THE PRESENCE OF A UTILITY SERVICE, ITS SIZE AND LOCATION SHOULD BE CONFIRMED BY FIELD INSPECTION, PRIOR TO THE COMMENCEMENT OF ROADWORKS AND THE RELEVANT UTILITY PLANS OBTAINED BY DIALLING PH 1100 OR FAX 1300652 077 (DIAL BEFORE YOU DIG). CAUTION SHOULD BE EXERCISED WHEN WORKING IN THE VICINITY OF ALL UTILITY SERVICES.



KEY PLAN
N.T.S

NOT FOR CONSTRUCTION

DRAWING FILE LOCATION \ NAME \\Jacobs.com\ANZ\IE\Projects\04_Eastern\IA182900\01 Design\Drawings\IA182900-0000-CR-DRG-UT-0101-0103.dwg					PROJECT BREAKDOWN STRUCTURE		JACOBS DOCUMENT NUMBER IA182900-0000-CR-DRG-UT-0101-0103		PLOT DATE / TIME 10/04/2019 4:09:16 PM		PLOT BY shail		CLIENT		LGA178 - MAITLAND COUNCIL, LGA 186 - CESSNOCK COUNCIL MR195 CESSNOCK ROAD MAINTAIN ACCESS DURING FLOOD EVENTS GILLIESTON HEIGHTS (TESTERS HOLLOW) UTILITY COORDINATION PLAN CH250 TO CH500		SHEET 2 OF 3		A3												
DESIGN MODEL FILE(S) USED FOR DOCUMENTATION OF THIS DRAWING DS2019/000008-DESI-DD100-190409					REV	DATE	AMENDMENT / REVISION DESCRIPTION		APPROVAL	SCALES ON A3 SIZE DRAWING		DRAWINGS / DESIGN PREPARED BY		TITLE	NAME	DATE	NSW GOVERNMENT		Transport Roads & Maritime Services		PREPARED FOR HUNTER REGION ENGINEERING SERVICES NEWCASTLE		RMS REGISTRATION No. DS2019/000008		PART -						
					0	-	NOT ISSUED FOR INFORMATION ONLY		-			 710 Hunter Street Newcastle West, NSW 2302 AUSTRALIA Tel: (02) 4979 2600 Fax (02) 4979 2666 Web: www.jacobs.com		DRAWN	J. PARISH	09.04.19					ISSUE STATUS INFORMATION DOCUMENT		EDMS No. SF2013/166126		SHEET No. UT-0102		REV 2				
					1	26.10.18 09.04.19	FOR INFORMATION ONLY		-					CO-ORDINATE SYSTEM MGA ZONE 56		HEIGHT DATUM AHD													DRG CHECK	A. HYLAND	09.04.19
					2		FOR INFORMATION ONLY		D.A.							DESIGN													A. HYLAND	09.04.19	
														DESIGN CHECK	T. McIntyre	09.04.19															
														DESIGN MNGR	D. ARMSTRONG	09.04.19															
														PROJECT MNGR	J. MAGIN	09.04.19															

THIS DRAWING MAY BE PREPARED IN COLOUR AND MAY BE INCOMPLETE IF COPIED

50mm ON A3 SIZE ORIGINAL



BOREHOLE LOCATION SCHEDULE		
BORHOLE NUMBER	EASTING	NORTHING
TC31	361787.38	6371963.33
TC32	361793.58	6372002.96
TC33	361802.13	6372048.60
TC34	361809.13	6372088.10
TC35	361815.44	6372128.03

REFER RMS UTILITIES AND POTHOLING REPORTS DATED 19.02.2019

LEGEND

EXISTING PAVEMENT

EARTHWORKS AND GROUND INTERFACE

NEW CADASTRAL BOUNDARY

CHARACTERS DENOTING UTILITY TYPE:
TC: COMMUNICATIONS
G: GAS
E: ELECTRICITY (OVERHEAD ELECTRICITY SHOWN WITH
LINETYPE SYMBOLOGY)
W: WATER SUPPLY
S: SEWER

(QL-X) X DENOTES CLASSIFICATION OF SUB- SURFACE
UTILITY INFORMATION STANDARD AS5488:
QUALITY LEVEL D (QL-D), C (QL-C), B (QL-B), A (QL-A)

TC(C)

RETAIN EXISTING UTILITIES

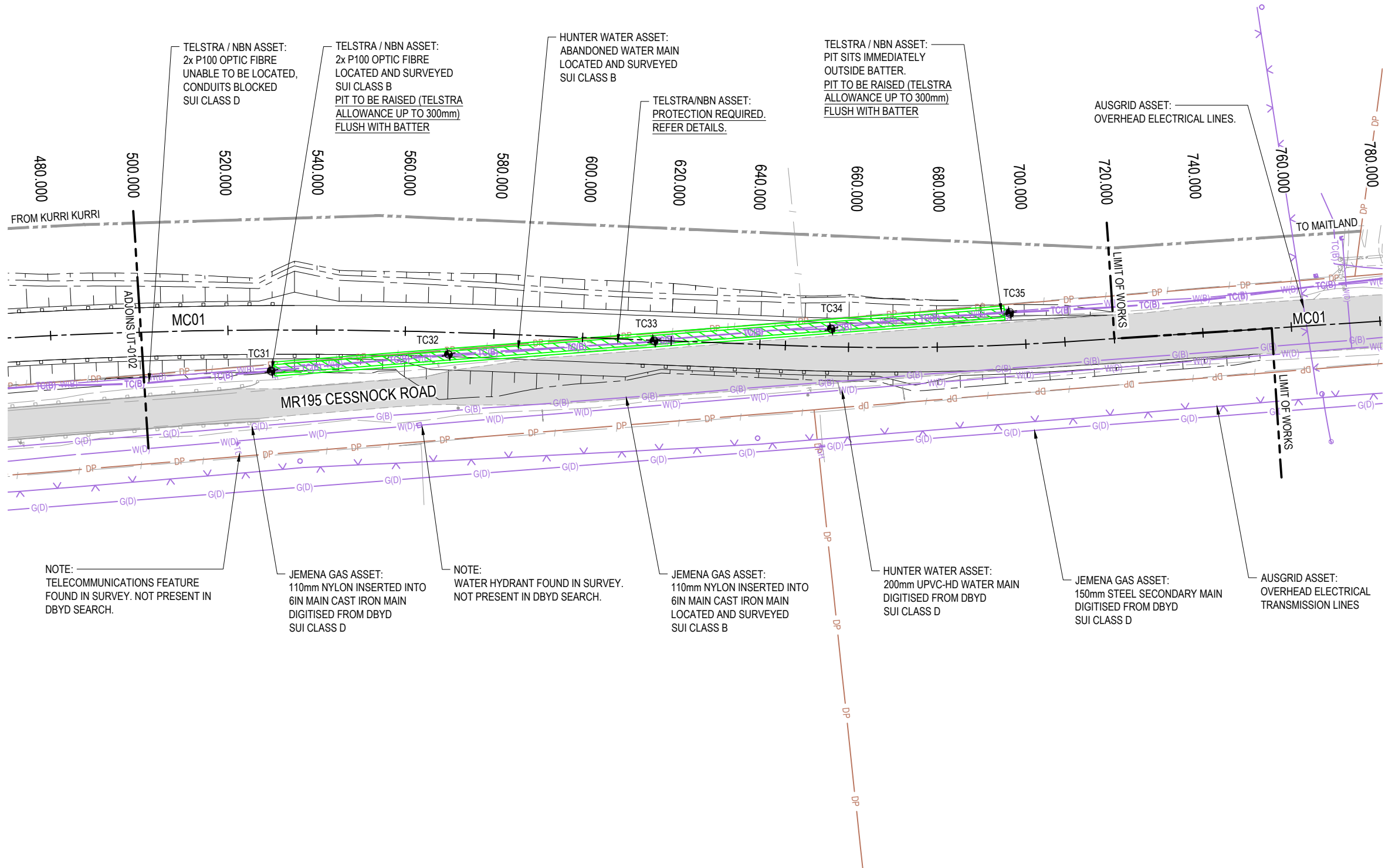
TC(C)

REMOVE EXISTING UTILITIES

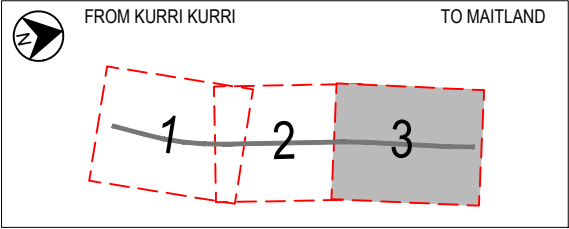
TC

DESIGN UTILITIES

UNDERGROUND UTILITY PROTECTION. REFER DETAILS
IN RD DRAWING SERIES.



- NOTES
- UTILITY INFORMATION SHOWN ON THE PLANS DOES NOT DEPICT ANY MORE THAN THE PRESENCE OF A SERVICE, BASED ON AVAILABLE DOCUMENTARY EVIDENCE. THE PRESENCE OF A UTILITY SERVICE, ITS SIZE AND LOCATION SHOULD BE CONFIRMED BY FIELD INSPECTION, PRIOR TO THE COMMENCEMENT OF ROADWORKS AND THE RELEVANT UTILITY PLANS OBTAINED BY DIALLING PH 1100 OR FAX 1300652 077 (DIAL BEFORE YOU DIG). CAUTION SHOULD BE EXERCISED WHEN WORKING IN THE VICINITY OF ALL UTILITY SERVICES.



KEY PLAN
N.T.S.
NOT FOR CONSTRUCTION

DRAWING FILE LOCATION \ NAME \\Jacobs.com\ANZ\IE\Projects\04_Eastern\1A182900\01_Design\Drawings\1A182900-0000-CR-DRG-UT-0101-0103.dwg				PROJECT BREAKDOWN STRUCTURE		JACOBS DOCUMENT NUMBER 1A182900-0000-CR-DRG-UT-0101-0103		PLOT DATE / TIME 10/04/2019 4:09:17 PM		PLOT BY shail		CLIENT  Transport Roads & Maritime Services		LGA178 - MAITLAND COUNCIL, LGA 186 - CESSNOCK COUNCIL MR195 CESSNOCK ROAD MAINTAIN ACCESS DURING FLOOD EVENTS GILLIESTON HEIGHTS (TESTERS HOLLOW) UTILITY COORDINATION PLAN CH500 TO LIMIT OF WORKS		A3	
DESIGN MODEL FILE(S) USED FOR DOCUMENTATION OF THIS DRAWING DS2019/000008-DESI-DD100-190409	REV 0 1 2	DATE - 26.10.18 09.04.19	AMENDMENT / REVISION DESCRIPTION NOT ISSUED FOR INFORMATION ONLY FOR INFORMATION ONLY	APPROVAL - D.A. D.A.	SCALES ON A3 SIZE DRAWING SCALE 1:1000  AT A3	DRAWINGS / DESIGN PREPARED BY  710 Hunter Street Newcastle West, NSW 2302 AUSTRALIA Tel: (02) 4979 2600 Fax: (02) 4979 2666 Web: www.jacobs.com		TITLE	NAME	DATE	PREPARED FOR HUNTER REGION ENGINEERING SERVICES NEWCASTLE		RMS REGISTRATION No. DS2019/000008	ISSUE STATUS INFORMATION DOCUMENT	EDMS No. SF2013/166126	SHEET No. UT-0103	REV 2
CO-ORDINATE SYSTEM MGA ZONE 56		HEIGHT DATUM AHD		DESIGN CHECK A. HYLAND 09.04.19		DESIGN MNGR D. ARMSTRONG 09.04.19		PROJECT MNGR J. MAGIN 09.04.19		SHEET 3 OF 3		© Roads and Maritime Services					