



Government Gazette

OF THE STATE OF

NEW SOUTH WALES

Week No. 35/2012

Friday, 31 August 2012

*Published under authority by
Department of Premier and Cabinet
Level 11, Bligh House
4-6 Bligh Street, SYDNEY NSW 2000
Phone: 9228 3120 Fax: 9372 7422
Email: nswgazette@dpc.nsw.gov.au*

*Containing numbers 86 and 87
Pages 3805 – 3876*

CONTENTS

Number 86

LEGISLATION

Online notification of the making of Statutory Instruments.....	3805
Assent to Acts	3807

OFFICIAL NOTICES

Appointments	3808
Department of Planning and Infrastructure.....	3809
Roads and Maritime Services	3813
Department of Trade and Investment, Regional Infrastructure and Services	3814
Primary Industries	3816
Lands.....	3817
Water.....	3836
Other Notices	3838

PRIVATE ADVERTISEMENTS

(Council, Probate, Company Notices, etc).....	3869
---	------

Number 87

PUBLIC SECTOR NOTICES

Chief Executive Service – Appointment	3875
---	------

DEADLINES

Attention Advertisers . . .

Government Gazette inquiry times are:

Monday to Friday: 8.30 am to 4.30 pm

Phone: (02) 9228 3120 Fax: (02) 9372 7422

Email: nswgazette@dpc.nsw.gov.au

GOVERNMENT GAZETTE DEADLINES

Close of business every Wednesday

Except when a holiday falls on a Friday, deadlines will be altered as per advice given on this page.

Special Supplements

A Special Supplement or Extraordinary Supplement is a document which has a legal requirement to commence on a certain date and time. Release of Publication is required on the same day. The request for a Supplement is received from the department to the *Government Gazette* by telephone. The copy must be accompanied by a letter or email requesting the Supplement and signed by a Minister or Head of a Department.

NOTE: Advance notice of a Special Supplement is essential as early as possible on the day required. On Thursdays early notice is a priority and when possible notice should be given a day prior being the Wednesday.

Please Note:

- *Only electronic lodgement of Gazette contributions will be accepted. If you have not received a reply confirming acceptance of your email by the close of business on that day please phone 9228 3120.*

Department of Finance and Services Tenders

SUPPLIES AND SERVICES FOR THE PUBLIC SERVICE

Information in relation to the Department of Finance and Services proposed, current and awarded tenders is available on:

<http://www.tenders.nsw.gov.au>

SEE the Government Gazette website at:
<http://nsw.gov.au/gazette>



Government Gazette

OF THE STATE OF
NEW SOUTH WALES

Number 86
Friday, 31 August 2012

Published under authority by the Department of Premier and Cabinet

LEGISLATION

Online notification of the making of statutory instruments

Week beginning 20 August 2012

THE following instruments were officially notified on the NSW legislation website (www.legislation.nsw.gov.au) on the dates indicated:

Proclamations commencing Acts

Heritage Amendment Act 2011 No 71 (2012-391) — published LW 24 August 2012

Regulations and other statutory instruments

Children (Education and Care Services) Supplementary Provisions Regulation 2012 (2012-392) — published LW 24 August 2012

Civil Procedure Regulation 2012 (2012-393) — published LW 24 August 2012

Criminal Assets Recovery Regulation 2012 (2012-394) — published LW 24 August 2012

District Court Amendment (Applications for Trial by Judge Alone) Rule 2012 (2012-395) — published LW 24 August 2012

Drug and Alcohol Treatment Regulation 2012 (2012-396) — published LW 24 August 2012

Environmental Planning and Assessment Amendment (Transitional Part 3A Projects) Regulation 2012 (2012-397) — published LW 24 August 2012

Fisheries Management (Aquaculture) Regulation 2012 (2012-398) — published LW 24 August 2012

Fisheries Management (General) Amendment (Diseased and Noxious Fish and Marine Vegetation) Regulation 2012 (2012-399) — published LW 24 August 2012

Fluoridation of Public Water Supplies Regulation 2012 (2012-400) — published LW 24 August 2012

Heritage Regulation 2012 (2012-401) — published LW 24 August 2012

Independent Pricing and Regulatory Tribunal Regulation 2012 (2012-402) — published LW 24 August 2012

Lake Illawarra Authority Regulation 2012 (2012-403) — published LW 24 August 2012

Law Enforcement (Controlled Operations) Regulation 2012 (2012-422) — published LW 24 August 2012

Liquor Amendment (Conditional Grants) Regulation 2012 (2012-404) — published LW 24 August 2012

Non-Indigenous Animals Regulation 2012 (2012-405) — published LW 24 August 2012

Parramatta Park Trust Regulation 2012 (2012-406) — published LW 24 August 2012

Partnership Regulation 2012 (2012-421) — published LW 24 August 2012

Ports and Maritime Administration Regulation 2012 (2012-407) — published LW 24 August 2012

[Prevention of Cruelty to Animals Regulation 2012 \(2012-408\)](#) — published LW 24 August 2012

[Protection of the Environment Administration Regulation 2012 \(2012-409\)](#) — published LW 24 August 2012

[Racing Administration Regulation 2012 \(2012-410\)](#) — published LW 24 August 2012

[Regional Development Regulation 2012 \(2012-411\)](#) — published LW 24 August 2012

[Rural Lands Protection Amendment \(Stock Transport and Camels\) Regulation 2012 \(2012-412\)](#) — published LW 24 August 2012

[Subordinate Legislation \(Postponement of Repeal\) Order \(No 2\) 2012 \(2012-413\)](#) — published LW 24 August 2012

[Totalizator Regulation 2012 \(2012-414\)](#) — published LW 24 August 2012

[Witness Protection Regulation 2012 \(2012-415\)](#) — published LW 24 August 2012

Environmental Planning Instruments

[Blacktown Local Environmental Plan 1988 \(Amendment No 226\) \(2012-416\)](#) — published LW 24 August 2012

[Blacktown Local Environmental Plan 1988 \(Amendment No 237\) \(2012-417\)](#) — published LW 24 August 2012

[Lake Macquarie Local Environmental Plan 2004 \(Amendment No 68\) \(2012-418\)](#) — published LW 24 August 2012

[South Sydney Local Environmental Plan 1998 \(Amendment No 22\) \(2012-419\)](#) — published LW 24 August 2012

[Wingecarribee Local Environmental Plan 2010 \(Amendment No 5\) \(2012-420\)](#) — published LW 24 August 2012

Assents to Acts

ACTS OF PARLIAMENT ASSENTED TO

Legislative Assembly Office, Sydney, 28 August 2012

IT is hereby notified, for general information, that His Excellency the Lieutenant-Governor has, in the name and on behalf of Her Majesty, this day assented to the undermentioned Acts passed by the Legislative Assembly and Legislative Council of New South Wales in Parliament assembled, viz.:

Act No. 57, 2012 — An Act to amend the Graffiti Control Act 2008 and other Acts to make further provision with respect to the punishment of graffiti offences and removal or obliteration of graffiti; and for other purposes. [**Graffiti Legislation Amendment Bill**]

Act No. 58, 2012 — An Act relating to fiscal responsibility in the management of government finances; to repeal the Fiscal Responsibility Act 2005; and to make consequential amendments to the Public Finance and Audit Act 1983. [**Fiscal Responsibility Bill**]

Act No. 59, 2012 — An Act to apply as a law of this State a national law relating to the registration of community housing providers, to make other provision for community housing providers and community housing and to make consequential amendments to the Housing Act 2001 and to other legislation. [**Community Housing Providers (Adoption of National Law) Bill**]

RONDA MILLER,
Clerk of the Legislative Assembly

OFFICIAL NOTICES

Appointments

**SYDNEY WATER CATCHMENT MANAGEMENT
ACT 1998**

Appointment under Section 9

HER Excellency the Governor, with the advice of the Executive Council, pursuant to the provisions of the Sydney Water Catchment Management Act 1998, has appointed the officer listed below to the position as specified:

Sydney Catchment Authority

Mr Ross YOUNG, Chief Executive [2 October 2012 to 1 October 2017].

The Hon. K. HODGKINSON, M.P.,
Minister for Primary Industries

Department of Planning

ENVIRONMENTAL PLANNING AND ASSESSMENT ACT 1979

Environmental Planning and Assessment (Local Infrastructure Contributions) Direction 2012
under the

Environmental Planning and Assessment Act 1979

I, the Minister for Planning and Infrastructure, in pursuance of section 94E of the Environmental Planning and Assessment Act 1979, give the following Direction.

Dated: 21 August 2012.

BRADLEY HAZZARD, M.P.,
Minister for Planning and Infrastructure

1. Name of Direction

This Direction is the Environmental Planning and Assessment (Local Infrastructure Contributions) Direction 2012.

2. When Direction takes effect

This Direction takes effect on 28 August 2012.

3. Consent authorities to which Direction is given

- (1) This Direction is given to all councils.
- (2) This Direction also applies to any joint regional planning panel ("planning panel") when exercising consent authority functions of one or more councils.

4. No cap on contributions for development on Schedule 1 land

This Direction does not apply to a development consent to the extent that it authorises the carrying out of development on any land identified in Schedule 1, but applies to the carrying out of development on all other land within the State.

5. Definitions

- (1) In this Direction:
 - (a) *dwelling* means a room or suite of rooms occupied or used or so constructed or adapted as to be capable of being occupied or used as a separate domicile, and
 - (b) *residential lot* means a lot created by the subdivision of land for the purpose of a dwelling, not being a lot that, in the opinion of the council (or planning panel), is to be further subdivided for the purpose of creating lots for the purpose of dwellings.

Note: See section 4B of the Environmental Planning and Assessment Act 1979 for the meaning of "subdivision of land".

- (2) A reference in this Direction to a development consent that authorises a dwelling is a reference to a development consent that authorises the erection of the dwelling or the use of a building or part of a building as a dwelling.

Note: See section 4 (2) of the Environmental Planning and Assessment Act 1979 for interpretation of the phrase "erection of a dwelling".

- (3) Notes in this Direction do not form part of this Direction.

6. Maximum amount of monetary contributions under s 94

- (1) This clause applies to a development consent to the extent that it authorises one or more dwellings or the subdivision of land into residential lots.
- (2) A council (or planning panel) must not grant development consent (other than for development on land identified in Schedule 2) subject to a condition under section 94 (1) or (3) of the Environmental Planning and Assessment Act 1979 requiring the payment of a monetary contribution that:
 - (a) in the case of a development consent that authorises one or more dwellings, exceeds \$20 000 for each dwelling authorised by the consent, or
 - (b) in the case of a development consent that authorises subdivision into residential lots, exceeds \$20 000 for each residential lot authorised to be created by the development consent.
- (3) A council (or planning panel) must not grant development consent for development on any land identified in Schedule 2 subject to a condition under section 94 (1) or (3) of the Environmental Planning and Assessment Act 1979 requiring the payment of a monetary contribution that:
 - (a) in the case of a development consent that authorises one or more dwellings, exceeds \$30 000 for each dwelling authorised by the consent, or
 - (b) in the case of a development consent that authorises subdivision into residential lots, exceeds \$30 000 for each residential lot authorised to be created by the development consent.

- (4) A council (or planning panel) may, in a particular case, require, as a condition on the grant of development consent, the payment of a monetary contribution that exceeds the maximum amount of the contribution calculated in accordance with subclause (2) or (3), but only with both the written agreement of the applicant for the consent and the written approval of the Minister, given before the condition is imposed.

7. Pending development applications

- (1) This Direction extends to development applications made to a council, but not finally determined, before this Direction takes effect.
- (2) This Direction does not apply to:
- (a) any application for modification of a development consent that was granted before this Direction takes effect, and
 - (b) any condition of a development consent that was granted before this Direction takes effect.

8. Revocation of existing direction

- (1) The Environmental Planning and Assessment (Local Infrastructure Contributions) Direction 2011 (which took effect on 4 March 2011) is revoked.
- (2) The revocation of the Environmental Planning and Assessment (Local Infrastructure Contributions) Direction 2011 does not affect:
- (a) the operation of a condition of a development consent imposed in accordance with that Direction, or
 - (b) the operation of a condition of a development consent imposed in accordance with the earlier direction under section 94E of the Environmental Planning and Assessment Act 1979 that took effect on 16 September 2010 and that was revoked by the Environmental Planning and Assessment (Local Infrastructure Contributions) Direction 2011.

Note:

Section 94EC (1A) of the Environmental Planning and Assessment Act 1979 provides as follows:

The imposition of a condition by an accredited certifier as authorised by a contributions plan is subject to compliance with any directions given under section 94E (1) (a), (b) or (d) with which a council would be required to comply if issuing the complying development certificate concerned.

SCHEDULE 1

Land in respect of which there is no cap on the amount of the contribution by virtue of this Direction

- (1) Land within the Bathurst Regional Local Government Area identified as Area E in the Section 94 Contributions Plan Robin Hill - Roads and Drainage Construction.
- (2) Land within the Blacktown City Local Government Area identified as any of the following:
 - (a) a 1980's Release Area in the Section 94 Contributions Plan No.1 – 1980's Release Areas,
 - (b) a catchment area in the Section 94 Contributions Plan No.2 – Local Roadworks,
 - (c) Catchment 1:Blacktown, Catchment 2: Rooty Hill/Mount Druitt or Catchment 3: Riverstone/Schofields in the Section 94 Contributions Plan No.3 – Open Space in Established Residential Areas,
 - (d) the Mount Druitt Development Area in the Section 94 Contributions Plan No.4 – Mount Druitt Development Area,
 - (e) the Parklea Release Area in the Section 94 Contributions Plan No. 5 – Parklea Release Area,
 - (f) the Metella Road Toongabbie Floodplain Catchment in the Section 94 Contributions Plan No.15 – Metella Road Floodplain.
- (3) Land within the Camden Local Government Area identified as:
 - (a) the Elderslie Release Area or the Spring Farm Release Area in the Camden Contributions Plan 2011, or
 - (b) the Narellan Release Area or the Harrington Park Release Area on the map marked 'Camden LGA – Exemptions Area' held at the head office of the Department of Planning and Infrastructure.
- (4) Land within the Campbelltown City Local Government Area identified as the Glenfield Road Urban Release Area in the Section 94 Development Contributions Plan – Glenfield Road Urban Release Area.
- (5) Land within the Coffs Harbour City Local Government Area identified as:
 - (a) the Wests Coffs Release Area in the West Coffs Release Area Contributions Plan 2006, or
 - (b) the Moonee Release Area identified in the Moonee Developer Contributions Plan 2008.
- (6) Land within the Hawkesbury City Local Government Area identified as the Pitt Town Residential Precinct in the Hawkesbury Section 94 Contributions Plan 2008.
- (7) Land within the Holroyd City Local Government Area identified as the Neil Street Precinct in the Neil Street Precinct Section 94 Development Contributions Plan 2007.

- (8) Land within the Ku-ring-gai Local Government Area identified as:
- (a) zoned R3 Medium Density Residential, R4 High Density Residential, B2 Local Centre, B4 Mixed Use, B5 Business Development, B7 Business Park, SP2 Infrastructure or RE1 Public Recreation under the Ku-ring-gai Local Environmental Plan (Town Centres) 2010 and to which the Ku-ring-gai Contribution Plan 2010 applies, or
 - (b) zoned No 2(d3) Residential "D3" under the Ku-ring-gai Local Environmental Plan No 194 and to which the Ku-ring-gai Contribution Plan 2010 applies.
- (9) Land within the Lake Macquarie City Local Government Area identified as:
- (a) the Northlakes Urban Release Area in the Lake Macquarie Section 94 Contributions Plan No.2 – Northlakes, or
 - (b) the Belmont Catchment, the Charlestown Catchment, the Glendale Catchment, the Morriset Catchment or the Toronto Catchment in the Lake Macquarie Section 94 Contributions Plan No.1 – Citywide.
- (10) Land within the Liverpool City Local Government Area identified as Carnes Hill, Hoxton Park, Middleton Grange or Prestons in the Liverpool Contributions Plan 2009.
- (11) Land within the Marrickville Local Government Area to which the Marrickville Section 94 Contributions Plan 2004 applies.
- (12) Land within the Palerang Local Government Area identified as Summerhill Road, Matthews Lane, the Woolshed Lane, Wanna Wanna Road, Clare Lane, Joe Rocks Road or Fernloff Road on the map marked 'Palerang LGA – Exemptions Area' held at the head office of the Department of Planning and Infrastructure.
- (13) Land within the Penrith City Local Government Area identified as:
- (a) Claremont Meadows Stage 2 in the Claremont Meadows Development Contributions Plan Amendment No.1, or
 - (b) Glenmore Park Stage 1 in the Glenmore Park Stage 1 Development Contributions Plan 2008.
- (14) Land within the Pittwater Local Government Area identified as the Warriewood Valley Urban Release Area in the Warriewood Valley Section 94 Contributions Plan No. 15 Amendment No.16.
- (15) Land within the Port Macquarie-Hastings Local Government Area identified as Kings Creek in the Kings Creek Contributions Plan Version 2.5.
- (16) Land within the Queanbeyan City Local Government Area identified as the Wanna Wanna Road Precinct on the map marked 'Queanbeyan LGA – Exemptions Area' held at the head office of the Department of Planning and Infrastructure.
- (17) Land within the Shoalhaven City Local Government Area identified as the Riversdale Road Area, the Parma Road Area or the Kangaroo River Bridge Area in the Shoalhaven Contributions Plan 2010.
- (18) Land within The Hills Shire Local Government Area identified as any of the following:
- (a) Kellyville/Rouse Hill in the Section 94 Contributions Plan No.8 – Kellyville/Rouse Hill,
 - (b) Bella Vista Village in the Section 94 Contributions Plan No.2 – Bella Vista Village,
 - (c) the West Pennant Hills Valley in the Section 94 Contributions Plan No.2 – West Pennant Hills Valley,
 - (d) Crestwood in the Section 94 Contributions Plan No.3 – Crestwood,
 - (e) Glenhaven in the Section 94 Contributions Plan No.4 – Glenhaven,
 - (f) Castle Hill in the Section 94 Contributions Plan No.5 – Castle Hill,
 - (g) a Southern Precinct in the Section 94 Contributions Plan No.7 – Southern Precincts.
- (19) Land within the Tweed Local Government Area identified as Seaside City in the Section 94 Contributions Plan No.28 – Seaside City.
- (20) Land within the Wyong Local government Area identified as:
- (a) The Entrance District in the Section 94 Contributions Plan No.3 'The Entrance District', or
 - (b) the Warnervale District Release Areas in the Section 94 Contributions Plan No.7A 'Drainage, Water Quality, Open Space, Community Facilities and Roads – Warnervale District'.

SCHEDULE 2

Land subject to the \$30,000 maximum contribution

- (1) Land within the Camden Local Government Area identified as Harrington Grove or Mater Dei on the map marked 'Camden LGA – Greenfield Release Areas' held at the head office of the Department of Planning and Infrastructure.
- (2) Land within the Coffs Harbour City Local Government Area identified as the Hearnese Lake Release Area or Sandy Beach Release Area in the Hearnese Lake/Sandy Beach Release Area Developer Contributions Plan 2008.
- (3) Land within the Eurobodalla Local Government Area identified as Glenella Service Road 1c, Batehaven Greenfield Area, Broulee Greenfield Area, Dalmeny Greenfield Area, Kiangra Greenfield Area, Malua Bay Greenfield Area, Bay Ridge 1c, Moruya 1c, Tomakin Greenfield Area, Longbeach Greenfield Area, Moruya South Greenfield Area, Moruya West Greenfield Area, Mystery Bay Greenfield Area, Narooma Greenfield Area, Nelligen 1c, Rosedale Greenfield Area, Central Tilba 1c or Bingi 1c on the map marked 'Eurobodalla LGA – Greenfield Release Areas' held at the head office of the Department of Planning and Infrastructure.

- (4) Land within the Greater Taree City Local Government Area identified as the Old Bar Precinct 2B or Precinct 3 in the Old Bar Contributions Plan 2010.
 - (5) Land within the Lake Macquarie City Local Government Area identified as North Wallarah in the Lake Macquarie Section 94 Contributions Plan No.5 – North Wallarah.
 - (6) Land within the Maitland City Local Government Area identified as the Thornton North Release Area in the Thornton North Section 94 Contributions Plan.
 - (7) Land within the Nambucca Shire Local Government Area identified as the Contribution Catchment on Map C1 in the Smiths Lane Local Road and Traffic Infrastructure Developer Contribution Plan 2010.
 - (8) Land within the Penrith City Local Government Area identified as:
 - (a) the WELL Precinct in the Werrington Enterprise Living and Learning (WELL) Precinct Development Contribution Plan, or
 - (b) Glenmore Park Stage 2 in the Glenmore Park Stage 2 Development Contributions Plan.
 - (9) Land within the Port Macquarie-Hastings Local Government Area identified as Thrumster, Innes Peninsula, Camden Haven or Lake Cathie / Bonny Hills on the map marked 'Port Macquarie-Hastings LGA – Greenfield Release Areas' held at the head office of the Department of Planning and Infrastructure.
 - (10) Land within the Queanbeyan City Local Government Area identified as Locations 3 and 4 on the Fernleigh/Royalla Rural Roads Contribution Map in the Queanbeyan City Council – Section 94 Contributions Plan 2012.
 - (11) Land within Shoalhaven City Local Government Area identified in Shoalhaven Contributions Plan 2010 as any of the following:
 - (a) Iron Bark Road Tapitallee upgrade area,
 - (b) Flannery Lane upgrade area,
 - (c) Browns Mountain Road upgrade area,
 - (d) Broger's Creek Road gravel upgrade area,
 - (e) Wattamolla Road upgrade area,
 - (f) Graham's Road/unnamed road gravel upgrade area,
 - (g) Spotted Gum Drive upgrade area,
 - (h) Hart Road bitumen upgrade area,
 - (i) Sinclair Road Part 3 bitumen upgrade area,
 - (j) Bendalong Mountain Road upgrade area,
 - (k) Pointer Road upgrade area,
 - (l) Bugong Road upgrade area.
 - (12) Land within The Hills Shire Local Government Area identified as the Balmoral Road Release Area in the Section 94 Contributions Plan No. 12 – Balmoral Road.
 - (13) Land within the Tweed Local Government Area identified as Black Rocks, Koala Beach, West Murwillumbah, Tanglewood, Kings Forest – Casuarina Beach, SALT, West Kingscliff, Area 'E' (Terranora), Terranora Village, Bilambil Heights, Cobaki Lakes, Nightcap Village or Hastings Point on the map marked 'Tweed LGA – Greenfield Release Areas' held at the head office of the Department of Planning and Infrastructure.
 - (14) Land within the Wollongong City Local Government Area identified as the West Dapto Release Area in the West Dapto Section 94 Development Contributions Plan 2010.
 - (15) Land within a growth centre within the meaning of State Environmental Planning Policy (Sydney Region Growth Centres) 2006 (being the North West Growth Centre and the South West Growth Centre) other than land that is a precinct or other area identified in Schedule 1.
-

Roads and Maritime Services

ROAD TRANSPORT (GENERAL) ACT 2005

Notice under Clause 20 of the Road Transport (Mass, Loading and Access) Regulation 2005

ALBURY CITY COUNCIL in pursuance of Division 4 of Part 2 of the Road Transport (Mass, Loading, Access) Regulation 2005, by this Notice, specify the routes and areas on or in which 25 metre B-Doubles may be used subject to any requirements or conditions set out in the Schedule.

Dated: 16 August 2012.

Mr MICHAEL KEYES,
A/General Manager,
Albury City Council
(by delegation from the Minister for Roads)

SCHEDULE

1. Citation

This Notice may be cited Albury City Council 25 Metre B-Double Route Notice No. 01/2012.

2. Commencement

This Notice takes effect on the date of gazettal.

3. Effect

This Notice remains in force until 1 September 2015, unless it is amended or repealed earlier.

4. Application

This Notice applies to those 25 metre B-Double vehicles which comply with Schedule 1 of the Road Transport (Mass, Loading and Access) Regulation 2010 and Schedule 2 of the Road Transport (Vehicle Registration) Regulation 2007.

5. Routes

<i>Type</i>	<i>Road No.</i>	<i>Road Name</i>	<i>Starting Point</i>	<i>Finishing Point</i>
25.	0000.	Alexandra Street.	Drome Street.	Western property boundary of 94 Borella Road.

Department of Trade and Investment, Regional Infrastructure and Services

MINERAL RESOURCES

NOTICE is given that the following applications have been received:

EXPLORATION LICENCE APPLICATIONS

(T12-1191)

No. 4640, PMR4 PTY LTD (ACN 158 330 404), area of 32 units, for Group 1, dated 24 August 2012. (Inverell Mining Division).

(T12-1192)

No. 4641, ACI INDUSTRIAL MINERALS PTY LTD (ACN 115 665 471), area of 6 units, for Group 10, dated 24 August 2012. (Singleton Mining Division).

(T12-1193)

No. 4642, WOODHAWK REMEDIATION SERVICES PTY LTD (ACN 159 667 197), area of 6 units, for Group 1, dated 27 August 2012. (Orange Mining Division).

MINING LEASE APPLICATIONS

(T11-0274)

No. 411, Michael John McCARTHY, area of about 6 hectares, for the purpose of opal puddling and stockpiling or depositing of overburden, ore or tailings, dated 2 September 2011. (Lightning Ridge Mining Division).

(T11-0368)

No. 415, BORAL LIMITED (ACN 008 421 761), area of about 548726 square metres, to mine for clay/shale, dated 15 November 2011. (Sydney Mining Division).

CHRIS HARTCHER, M.P.,
Minister for Resources and Energy

NOTICE is given that the following application has been granted:

EXPLORATION LICENCE APPLICATION

(T12-1034)

No. 4490, now Exploration Licence No. 7958, SIBELCO AUSTRALIA LIMITED (ACN 000 971 844), County of Harden, Map Sheet (8628), area of 11 units, for Group 2, dated 15 August 2012, for a term until 15 August 2015.

CHRIS HARTCHER, M.P.,
Minister for Resources and Energy

NOTICE is given that the following application has been withdrawn:

EXPLORATION LICENCE APPLICATION

(T11-0272)

No. 4364, HEI LONG PTY LTD (ACN 1500 469 69), County of Forbes and County of Montegale, Map Sheet (8529, 8530). Withdrawal took effect on 27 August 2012.

CHRIS HARTCHER, M.P.,
Minister for Resources and Energy

NOTICE is given that the following applications for renewal have been received:

(T01-0236)

Exploration Licence No. 5982, ZINTOBA PTY LTD (ACN 001 318 341) and PEAK GOLD MINES PTY LTD (ACN 001 533 777), area of 18 units. Application for renewal received 21 August 2012.

(06-0097)

Exploration Licence No. 6616, GLENELLA QUARRY PTY LTD (ACN 117 019 155), area of 10 units. Application for renewal received 22 August 2012.

(T07-0531)

Exploration Licence No. 7195, ICARUS MINES PTY LTD (ACN 140 149 515), area of 121 units. Application for renewal received 27 August 2012.

(T08-0069)

Exploration Licence No. 7200, CLANCY EXPLORATION LIMITED (ACN 105 578 756) and GOLD FIELDS AUSTRALASIA PTY LTD (ACN 087 624 600), area of 20 units. Application for renewal received 27 August 2012.

(12-4298)

Exploration Licence No. 7203, SILVER CITY MINERALS LIMITED (ACN 130 933 309), area of 36 units. Application for renewal received 22 August 2012.

(T08-0123)

Exploration Licence No. 7305, STANDARD IRON PTY LTD (ACN 131 971 438), area of 83 units. Application for renewal received 22 August 2012.

(T08-0124)

Exploration Licence No. 7306, STANDARD IRON PTY LTD (ACN 131 971 438), area of 45 units. Application for renewal received 22 August 2012.

(T08-0125)

Exploration Licence No. 7307, STANDARD IRON PTY LTD (ACN 131 971 438), area of 98 units. Application for renewal received 22 August 2012.

(T08-0126)

Exploration Licence No. 7308, STANDARD IRON PTY LTD (ACN 131 971 438), area of 49 units. Application for renewal received 22 August 2012.

(T08-0127)

Exploration Licence No. 7309, STANDARD IRON PTY LTD (ACN 131 971 438), area of 30 units. Application for renewal received 22 August 2012.

(T08-0129)

Exploration Licence No. 7310, STANDARD IRON PTY LTD (ACN 131 971 438), area of 51 units. Application for renewal received 22 August 2012.

(T08-0130)

Exploration Licence No. 7311, STANDARD IRON PTY LTD (ACN 131 971 438), area of 57 units. Application for renewal received 22 August 2012.

(T08-0134)

Exploration Licence No. 7315, STANDARD IRON PTY LTD (ACN 131 971 438), area of 46 units. Application for renewal received 22 August 2012.

(T08-0136)

Exploration Licence No. 7317, STANDARD IRON PTY LTD (ACN 131 971 438), area of 102 units. Application for renewal received 22 August 2012.

(T08-0137)

Exploration Licence No. 7318, STANDARD IRON PTY LTD (ACN 131 971 438), area of 69 units. Application for renewal received 22 August 2012.

(T10-0040)

Exploration Licence No. 7599, GOLD AND COPPER RESOURCES PTY LIMITED (ACN 124 534 863), area of 1 units. Application for renewal received 23 August 2012.

(T10-0041)

Exploration Licence No. 7600, GOLD AND COPPER RESOURCES PTY LIMITED (ACN 124 534 863), area of 58 units. Application for renewal received 23 August 2012.

(T10-0079)

Exploration Licence No. 7614, John SLADE, area of 92 units. Application for renewal received 23 August 2012.

(T10-0077)

Exploration Licence No. 7615, John SLADE, area of 98 units. Application for renewal received 23 August 2012.

CHRIS HARTCHER, M.P.,
Minister for Resources and Energy

RENEWAL OF CERTAIN AUTHORITIES

NOTICE is given that the following authority has been renewed:

(T06-4162)

Exploration Licence No. 6844, RAPTOR MINERALS LIMITED (ACN 101 168 343), Counties of Landsborough and Yanda, Map Sheet (7936), area of 63 units, for a further term until 3 August 2013. Renewal effective on and from 21 June 2012.

CHRIS HARTCHER, M.P.,
Minister for Resources and Energy

TRANSFERS

(11-5525)

Exploration Licence No. 6413, formerly held by AUSMON RESOURCES LTD (ACN 134 358 964) and ROBUST OPERATIONS PTY LIMITED (ACN 106 964 881) has been transferred to AUSMON RESOURCES LTD (ACN 134 358 964). The transfer was registered on 21 August 2012.

(11-5525)

Exploration Licence No. 6416, formerly held by AUSMON RESOURCES LTD (ACN 134 358 964) and ROBUST OPERATIONS PTY LIMITED (ACN 106 964 881) has been transferred to AUSMON RESOURCES LTD (ACN 134 358 964). The transfer was registered on 21 August 2012.

(11-5525)

Exploration Licence No. 6417, formerly held by AUSMON RESOURCES LTD (ACN 134 358 964) and ROBUST OPERATIONS PTY LIMITED (ACN 106 964 881) has been transferred to AUSMON RESOURCES LTD (ACN 134 358 964). The transfer was registered on 21 August 2012.

(T09-0204)

Exploration Licence No. 7564, formerly held by AUSMON RESOURCES LTD (ACN 134 358 964) and ROBUST RESOURCES LTD (ACN 122 238 813) has been transferred to AUSMON RESOURCES LTD (ACN 134 358 964). The transfer was registered on 21 August 2012.

(12-1169)

Petroleum Exploration Licence No. 238, formerly held by EASTERN STAR GAS LIMITED (ACN 094 269 780) has been transferred to EASTERN STAR GAS LIMITED (ACN 094 269 780) and TRUENERGY GUNNEDAH GAS PTY LTD (ACN 147 609 729). The transfer was registered on 27 August 2012.

(12-1184)

Petroleum Exploration Licence No. 433, formerly held by EASTERN STAR GAS LIMITED (ACN 094 269 780) and SANTOS QNT PTY LTD (ACN 083 077 196) has been transferred to EASTERN STAR GAS LIMITED (ACN 094 269 780), SANTOS QNT PTY LTD (ACN 083 077 196) and TRUENERGY GUNNEDAH GAS PTY LTD (ACN 147 609 729). The transfer was registered on 27 August 2012.

(12-1185)

Petroleum Exploration Licence No. 434, formerly held by EASTERN STAR GAS LIMITED (ACN 094 269 780) and SANTOS QNT PTY LTD (ACN 083 077 196) has been transferred to EASTERN STAR GAS LIMITED (ACN 094 269 780), SANTOS QNT PTY LTD (ACN 083 077 196) and TRUENERGY GUNNEDAH GAS PTY LTD (ACN 147 609 729). The transfer was registered on 27 August 2012.

CHRIS HARTCHER, M.P.,
Minister for Resources and Energy

PRIMARY INDUSTRIES**FISHERIES MANAGEMENT ACT 1994**

Section 76

Instrument of Determination of Management Charge
for Abalone Fishery

I, GEOFF ALLAN, Executive Director, Fisheries NSW with the delegated authority of the Minister for Primary Industries and the Director-General pursuant to sections 227 and 228 of the Fisheries Management Act 1994 ("the Act") and pursuant to sections 76 (1) and (2) of the Act, do hereby determine the management charge for the period 1 July 2012 to 30 June 2013 payable by holders of shares in the abalone fishery (as described in Schedule 1 to the Act) to be \$77.20 per share.

Dated this 29th day of August 2012.

Dr GEOFF ALLAN,
Executive Director, Fisheries NSW,
Department of Primary Industries
(an office within the Department of Trade and
Investment, Regional Infrastructure and Services)

STOCK MEDICINES ACT 1989

Revocation of Order No. 2000/1

I, RICHARD SHELDRAKE, Director-General of the Department of Primary Industries, with the delegated authority of the Director General of the Department of Trade and Investment, Regional Infrastructure and Services pursuant to section 64 of the Stock Medicines Act 1989, and pursuant to section 46 of that Act, hereby revoke Stock Medicines Order 2000/1 published at pages 13217-13219 of *NSW Government Gazette* No. 162 dated 15 December 2000, and any Order revived as a result of this revocation.

Dated this 27th day of August 2012.

RICHARD SHELDRAKE,
Director-General,
Department of Primary Industries,
(an office within the Department of Trade and
Investment, Regional Infrastructure and Services)

**PRIMARY INDUSTRIES MINISTERIAL
ADVISORY COUNCIL**

Appointment of Members

I, KATRINA HODGKINSON, M.P., Minister for Primary Industries, appoint the persons listed in Schedule 1 below as members of the Primary Industries Ministerial Advisory Council for a period until 30 November 2014:

SCHEDULE 1

Lucinda CORRIGAN
Perin DAVEY
Peter WRIGHT
Michael MURRAY
Dave ANTHONY
David WOLFENDEN
Barry WALKER, O.A.M.
Bede BURKE
Chris CUMMINS
David LOWE
Alison ANDERSON
Malcolm HOLM
Ian DONGES
Sandra McDOUGALL
Jim PRATLEY
Christine FERGUSON
Paula FITZGERALD
Ian CARTWRIGHT
Grahame TURK
Richard SHELDRAKE

Dated this 3rd day of August 2012.

KATRINA HODGKINSON, M.P.,
Minister for Primary Industries

LANDS

ARMIDALE CROWN LANDS OFFICE

108 Faulkner Street (PO Box 199A), Armidale NSW 2350

Phone: (02) 6770 3100 Fax (02) 6772 8782

ROADS ACT 1993

ORDER

Transfer of Crown Roads to a Council

IN pursuance of the provisions of section 151, Roads Act 1993, the Crown public roads specified in each Schedule 1 are transferred to the Roads Authority specified in the corresponding Schedule 2 hereunder, as from the date of publication of this notice and as from that date, the roads specified in each Schedule 1, cease to be Crown public roads.

ANDREW STONER, M.P.,

Minister for Regional Infrastructure and Services

SCHEDULE 1

*Parish – Stanton; County – Clarke;
Land District – Armidale; L.G.A. – Guyra*

Crown road 20.115m wide known as Glassers Road at Aberfoyle, as shown by solid black shading on the diagram hereunder.



SCHEDULE 2

Roads Authority: Guyra Shire Council.

File No.: 09/04074. W.505046.

Council's Reference: David Counsell.

SCHEDULE 1

*Parish – Tarban; County – Clive;
Land District – Tenterfield; L.G.A. – Tenterfield*

Crown road 20.115m wide at Tarban, as shown by solid black shading on the diagram hereunder.



SCHEDULE 2

Roads Authority: Tenterfield Shire Council.

File No.: 07/4467. W.505100.

Council's Reference: John Martin.

SCHEDULE 1

*Parish – Cooper; County – Hardinge;
Land District – Inverell; L.G.A. – Uralla*

Crown road 20.115m wide at Bundarra, known as Spring Gully Road, as shown by solid black shading on the diagram hereunder.



SCHEDULE 2

Roads Authority: Uralla Shire Council.

File No.: 08/1378. W.505200.

Council's Reference: Robert Bell.

**REVOCATION OF RESERVATION OF CROWN
LAND**

PURSUANT to section 90 of the Crown Lands Act 1989, the reservation of Crown Land specified in Column 1 of the Schedule hereunder, is revoked to the extent specified opposite thereto in Column 2 of the Schedule.

ANDREW STONER, M.P.,
Minister for Regional Infrastructure and Services

SCHEDULE*Column 1*

Land District: Glen Innes.
Local Government Area:
Glen Innes Severn.
Locality: Glen Innes.
Reserve No.: 96294.
Public Purpose: Future
public requirements.
Notified: 27 August 1982.
File No.: AE02 H 328.

Column 2

The part being Lot 1, DP No.
1176785, Parish Glen Innes,
County Gough, of an area of
1728 square metres.

DUBBO CROWN LANDS OFFICE
45 Wingewarra Street (PO Box 1840), Dubbo NSW 2830
Phone: (02) 6883 3300 Fax: (02) 6884 2067

NOTIFICATION OF CLOSING OF ROADS

IN pursuance of the provisions of the Roads Act 1993, the roads hereunder specified are closed and the road ceases to be public road and the rights of passage and access that previously existed in relation to the road are extinguished.

ANDREW STONER, M.P.,
Minister for Regional Infrastructure and Services

Description

*Land District – Mudgee;
L.G.A. – Mid-Western Regional Council*

Lot 8, DP 1030302 in the Parish of Hearne, County of Roxburgh.

File No.: W483623.

Note: On closing, titles for the land in Lot 8 remains vested in the Mid-Western Regional Council as operational land.

ERRATUM

IN the notice appearing in the *New South Wales Government Gazette* of the 8th June 2012, Folio 2357, under the heading of “Notification of Closing of Roads”, delete from the Description County of Philip and replace with County of Phillip.

File No.: W454347.

ANDREW STONER, M.P.,
Minister for Regional Infrastructure and Services

NOTIFICATION OF CLOSING OF A ROAD

IN pursuance of the provisions of the Roads Act 1993, the road hereunder described is closed and the lands comprised therein cease to be public road and the rights of passage and access that previously existed in relation to the road is extinguished. Upon closing, title to the land, comprising the former public road, vests in the body specified in the Schedule hereunder.

ANDREW STONER, M.P.,
Minister for Regional Infrastructure and Services

Description

*Parish of Dubbo; County of Lincoln;
Land District – Dubbo; L.G.A. – Dubbo City Council*

Road Closed: Lot 10, DP 1170194.

File No.: W393646.

Schedule

On closing, title for the land within Lot 10, DP 1170194 remains vested in the Dubbo City Council as operational land.

GRAFTON OFFICE
49-51 Victoria Street (PO Box 272), Grafton NSW 2460
Phone: (02) 6640 3400 Fax: (02) 6642 5375

ROADS ACT 1993

ORDER

Correction of Defective Instrument

IN the notification appearing in the *New South Wales Government Gazette* of 24 August 2012, Folio 3765, under the heading "Notification of Closing of Road", Byron Shire Council, at Suffolk Park, the incorrect Lot number was submitted. Notice should read:

"Roads Closed: Lot 2, DP 1159888 – and not Lot 1 as previously stated, AND

Schedule

On closing, the land within Lot 2, DP 1159888 – and not Lot 1 as previously stated.

DPI File No.: 09/10168.

NOTIFICATION OF CLOSING OF A ROAD

IN pursuance of the provisions of the Roads Act 1993, the road hereunder described is closed and the lands comprised therein cease to be public road and the rights of passage and access that previously existed in relation to the road is extinguished. Upon closing, title to the land, comprising the former public road, vests in the body specified in the Schedule hereunder.

ANDREW STONER, M.P.,
Minister for Regional Infrastructure and Services

Description

Parish – Cudgen; County – Rous;
Land District – Murwillumbah; L.G.A. – Tweed

Road Closed: Lot 3, DP 1173940.

File No.: GF07 H 172.

Schedule

On closing, the land within Lot 3, DP 1173940 remains vested in the State of New South Wales as Crown Land.

Description

Parish – Condong; County – Rous;
Land District – Murwillumbah; L.G.A. – Tweed

Road Closed: Lot 1, DP 1173940.

File No.: GF07 H 172.

Schedule

On closing, the land within Lot 1, DP 1173940 remains vested in the State of New South Wales as Crown Land.

Description

Parish – Condong; County – Rous;
Land District – Murwillumbah; L.G.A. – Tweed

Road Closed: Lot 2, DP 1173940.

File No.: GF07 H 172.

Schedule

On closing, the land within Lot 2, DP 1173940 remains vested in the State of New South Wales as Crown Land.

Description

Parish – Berwick; County – Rous;
Land District – Murwillumbah; L.G.A. – Tweed

Road Closed: Lot 1, DP 1176264.

File No.: GF07 H 109.

Schedule

On closing, the land within Lot 1, DP 1176264 remains vested in the State of New South Wales as Crown Land.

Description

Parish – Maryvale; County – Clarence;
Land District – Grafton; L.G.A. – Clarence Valley

Road Closed: Lot 2, DP 1173117.

File No.: 07/1276.

Schedule

On closing, the land within Lot 2, DP 1173117 remains vested in the State of New South Wales as Crown Land.

GRIFFITH OFFICE
2nd Floor, Griffith City Plaza,
120–130 Banna Avenue (PO Box 1030), Griffith NSW 2680
Phone: (02) 6960 3600 Fax: (02) 6962 5670

NOTIFICATION OF CLOSING OF A ROAD

IN pursuance of the provisions of the Roads Act 1993, the road hereunder described is closed and the lands comprised therein cease to be public road and the rights of passage and access that previously existed in relation to the road is extinguished. Upon closing, title to the land, comprising the former public road, vests in the body specified in the Schedule hereunder.

ANDREW STONER, M.P.,
Minister for Regional Infrastructure and Services

Description

*Parishes – Gainbill and Killawarra; County – Dowling;
Land District – Lake Cargelligo; L.G.A. – Lachlan*

Road Closed: Lot 1, DP 1175620.

File No.: 11/03798.

Schedule

On closing, the land within Lot 1, DP 1175620 remains vested in the State of New South Wales as Crown Land.

HAY OFFICE
126 Lachlan Street (PO Box 182), Hay NSW 2711
Phone: (02) 6990 1800 Fax: (02) 6993 1135

NOTIFICATION OF CLOSING OF A ROAD

IN pursuance of the provisions of the Roads Act 1993, the road hereunder described is closed and the lands comprised therein cease to be public road and the rights of passage and access that previously existed in relation to the road is extinguished. Upon closing, title to the land, comprising the former public road, vests in the body specified in the Schedule hereunder.

ANDREW STONER, M.P.,
Minister for Regional Infrastructure and Services

Description

*Parishes – Benjee and Moulamein; County – Wakool;
Land District – Balranald South; L.G.A. – Conargo*

Road Closed: Lot 1, DP 1172477.

File No.: HY80 H 1252.

Schedule

On closing, the land within Lot 1, DP 1172477 remains vested in the State of New South Wales as Crown Land.

MAITLAND OFFICE**Corner Newcastle Road and Banks Street (PO Box 6), East Maitland NSW 2323****Phone: (02) 4937 9300****Fax: (02) 4934 2252****ROADS ACT 1993****ORDER****Transfer of Crown Road to a Council**

IN pursuance of the provisions of section 151, Roads Act 1993, the Crown roads specified in Schedule 1 are transferred to the Roads Authority specified in Schedule 2 hereunder, as from the date of publication of this notice and as from that date, the roads specified in Schedule 1 cease to be Crown roads.

ANDREW STONER, M.P.,**Minister for Regional Infrastructure and Services****SCHEDULE 1***Parish – Wybong; County – Brisbane;**Land District – Muswellbrook;**Local Government Area – Muswellbrook*

The Crown public road being part Ridgeland Road at Wybong, as shown on the diagram hereunder.

**SCHEDULE 2****Roads Authority: Muswellbrook Shire Council.****File No.: 12/02915.****SCHEDULE 1***Parish – Brogheda; County – Brisbane;**Land District – Muswellbrook;**Local Government Area – Muswellbrook*

The Crown public road being part Castlerock Road at Castlerock, as shown on the diagram hereunder.

**SCHEDULE 2****Roads Authority: Muswellbrook Shire Council.****File No.: 12/02915.****SCHEDULE 1***Parish – Liddell; County – Durham;**Land District – Singleton;**Local Government Area – Muswellbrook*

The Crown public road being part Hebden Road at Hebden, as shown on the diagram hereunder.

**SCHEDULE 2****Roads Authority: Muswellbrook Shire Council.****File No.: 12/02915.**

MOREE OFFICE**Frome Street (PO Box 388), Moree NSW 2400****Phone: (02) 6752 5055 Fax: (02) 6752 1707****APPOINTMENT OF ADMINISTRATOR TO
MANAGE A RESERVE TRUST**

PURSUANT to section 117, Crown Lands Act 1989, the person specified in Column 1 of the Schedule hereunder, is appointed as administrator for the term also specified, of the reserve trust specified opposite thereto in Column 2, which is trustee of the reserve referred to in Column 3 of the Schedule.

ANDREW STONER, M.P.,
Minister for Regional Infrastructure and Services

SCHEDULE

<i>Column 1</i>	<i>Column 2</i>	<i>Column 3</i>
Robert Cecil PERCIVAL.	Narrabri Racecourse Trust.	Dedication No.: 560025. Public Purpose: Racecourse and showground. Notified: 15 May 1912. File No.: ME81 R 87.

For a term commencing the date of this notice and expiring
22 February 2013.

ERRATUM

THE notification which appeared in the *New South Wales Government Gazette* on 9th April 1999, Folio 2698, appointed the Baan Baa Community Hall Incorporated as manager under the Crown Lands Act 1989 of the Baan Baa Literary Institute, Dedication No. 560026. This notice should have indicated that the appointment of the Baan Baa Community Hall Incorporated as trustee of the Baan Baa Literary Institute, Dedication No. 560026 is undertaken under the provisions of the Trustees of Schools of Arts Enabling Act 1902 (and not under the Crown Lands Act 1989).

File Nos: ME95 R 6 and 11/2515.

ANDREW STONER, M.P.,
Minister for Regional Infrastructure and Services

NEWCASTLE OFFICE

437 Hunter Street, Newcastle NSW 2300 (PO Box 2185, Dangar NSW 2309)

Phone: (02) 4925 4104 Fax: (02) 4925 3517

NOTIFICATION OF CLOSING OF A ROAD

IN pursuance of the provisions of the Roads Act 1993, the road hereunder described is closed and the lands comprised therein cease to be public road and the rights of passage and access that previously existed in relation to the road is extinguished. Upon closing, title to the land, comprising the former public road, vests in the body specified in the Schedule hereunder.

ANDREW STONER, M.P.,
Minister for Regional Infrastructure and Services

Description

*Parish – Merigan; County – Murray;
Land District – Braidwood; L.G.A. – Palerang*

Road Closed: Lot 1, DP 1174475 (subject to right of carriageway created by Deposited Plan 1174475).

File No.: 07/6080.

Schedule

On closing, the land within Lot 1, DP 1174475 remains vested in the State of New South Wales as Crown Land.

Description

*Parish – Kalinga; County – Cunningham;
Land District – Condobolin; L.G.A. – Lachlan*

Road Closed: Lot 1, DP 1177363.

File No.: CL/00737.

Schedule

On closing, the land within Lot 1, DP 1177363 remains vested in the State of New South Wales as Crown Land.

Description

*Parishes – Jeremy and Ballyroe; County – Georgiana;
Land District – Blayney; L.G.A. – Oberon*

Road Closed: Lot 1, DP 1175626 (subject to right of carriageway created by Deposited Plan 1175626).

File No.: CL/00745.

Schedule

On closing, the land within Lot 1, DP 1175626 remains vested in the State of New South Wales as Crown Land.

Description

*Parish – Bombala; County – Wellesley;
Land District – Bombala; L.G.A. – Bombala*

Road Closed: Lots 1-4, DP 1177793 (subject to right of carriageway created by Deposited Plan 1177793).

File No.: GB07 H 481:BA.

Schedule

On closing, the land within Lots 1-4, DP 1177793 remains vested in the State of New South Wales as Crown Land.

Description

*Parish – Weedallion; County – Bland;
Land District – Young; L.G.A. – Young*

Road Closed: Lots 1-2, DP 1176631.

File No.: GB06 H 406:BA.

Schedule

On closing, the land within Lots 1-2, DP 1176631 remains vested in the State of New South Wales as Crown Land.

Description

*Parish – Neila; County – Forbes;
Land District – Cowra; L.G.A. – Cowra*

Road Closed: Lot 1, DP 1177322.

File No.: 10/14391.

Schedule

On closing, the land within Lot 1, DP 1177322 remains vested in the State of New South Wales as Crown Land.

Description

*Parish – Cocomingla; County – Monteagle;
Land District – Boorowa; L.G.A. – Boorowa*

Road Closed: Lot 2, DP 1177322.

File No.: 10/14391.

Schedule

On closing, the land within Lot 2, DP 1177322 remains vested in the State of New South Wales as Crown Land.

Description

*Parish – Savoy; County – Durham;
Land District – Singleton; L.G.A. – Muswellbrook*

Road Closed: Lot 6, DP 1175270 (subject to right of carriageway created by Deposited Plan 1175270).

File No.: 08/8268.

Schedule

On closing, the land within Lot 6, DP 1175270 remains vested in the State of New South Wales as Crown Land.

Description

*Parishes – Ravensworth and Liddell; County – Durham;
Land District – Singleton; L.G.A. – Singleton*

Road Closed: Lots 4 and 5, DP 1175271.

File No.: 08/8268.

Schedule

On closing, the land within Lots 4 and 5, DP 1175271 remains vested in the State of New South Wales as Crown Land.

Description

*Parish – Howick; County – Durham;
Land District – Muswellbrook; L.G.A. – Singleton*

Road Closed: Lots 1 and 2, DP 1175303 (subject to easements for transmission line created by Deposited Plan 1175303).

File No.: 08/8268.

Schedule

On closing, the land within Lots 1 and 2, DP 1175303 remains vested in the State of New South Wales as Crown Land.

Description

*Parish – Wilga South; County – Gipps;
Land District – Condobolin; L.G.A. – Lachlan*

Road Closed: Lot 1, DP 1177736.

File No.: CL/00758.

Schedule

On closing, the land within Lot 1, DP 1177736 remains vested in the State of New South Wales as Crown Land.

Description

*Parish – Thornshope; County – Westmoreland;
Land District – Lithgow; L.G.A. – Lithgow*

Road Closed: Lot 1, DP 1177226.

File No.: 11/09401.

Schedule

On closing, the land within Lot 1, DP 1177226 remains vested in the State of New South Wales as Crown Land.

REVOCATION OF RESERVATION OF CROWN LAND

PURSUANT to section 90 of the Crown Lands Act 1989, the reservation of Crown Land specified in Column 1 of the Schedule hereunder, is revoked to the extent specified opposite thereto in Column 2 of the Schedule.

ANDREW STONER, M.P.,
Minister for Regional Infrastructure and Services

SCHEDULE

Column 1

Land District: Crookwell.
Local Government Area:
Upper Lachlan Shire
Council.
Locality: Bigga.
Reserve No.: 753067.
Public Purpose: Future
public requirements.
Notified: 29 June 2007.
File No.: 11/13454:BA.

Column 2

The parts being Lots 1 and 2, DP 1176620 (closed road vide gazette 27 March 1925, Folio 1615), Parish Yewrangara, County Georgiana, an area of 2.25 hectares.

Note: It is intended to sell the revoked part being closed road to the adjoining land owner.

ORANGE OFFICE
92 Kite Street (PO Box 2146), Orange NSW 2800
Phone: (02) 6391 4300 Fax: (02) 6362 3896

ROADS ACT 1993

ORDER

Transfer of Crown Road to Council

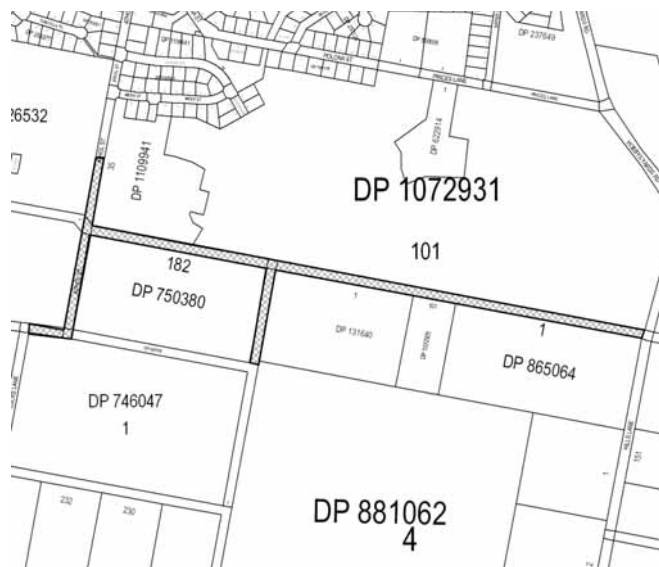
IN pursuance of the provisions of section 151, Roads Act 1993, the Crown public roads specified in Schedule 1 are transferred to the Roads Authority specified in Schedule 2 hereunder, as from the date of publication of this notice and as from that date, the roads specified in Schedule 1 cease to be Crown public roads.

KATRINA HODGKINSON, M.P.,
Minister for Primary Industries
and Minister for Small Business

SCHEDULE 1

*Parish – Errol; County – Bathurst;
Land District – Blayney; Town – Blayney*

Part west and south of Lot 35, DP 1109941; south of Lot 101, DP 1072931; east and part south of Lot 379, DP 659194 and east of Lot 182, DP 750380, shown in black hatching on diagram below.



SCHEDULE 2

Roads Authority: Blayney Shire Council.

Crown Lands Reference: 11/12926 – W505108.

Council Reference: Blayney.

SYDNEY METROPOLITAN OFFICE
Level 12, Macquarie Tower, 10 Valentine Avenue, Parramatta 2150
(PO Box 3935, Parramatta NSW 2124)
Phone: (02) 8836 5300 Fax: (02) 8836 5365

ERRATUM

THE notification which appeared in the *New South Wales Government Gazette* dated 24th August 2012, Folio 3771, under the heading "Notification of Closing of a Road", the Schedule was incorrect. The following notice replaces that in full and the gazettal date remains the same.

NOTIFICATION OF CLOSING OF A ROAD

IN pursuance of the provisions of the Roads Act 1993, the road hereunder described is closed and the lands comprised therein cease to be public road and the rights of passage and access that previously existed in relation to the road is extinguished. Upon closing, title to the land, comprising the former public road, vests in the body specified in the Schedule hereunder.

ANDREW STONER, M.P.,
Minister for Regional Infrastructure and Services

Description

*Parish – Megalong; County – Cook;
Land District – Penrith; L.G.A. – Blue Mountains*

Road Closed: Lot 1, DP 1177485.

File No.: 10/14133.

Schedule

On closing, the land within Part Lot 1, DP 1177485 remains vested in the State of New South Wales as Crown Land.

On closing, the land within Part Lot 1, DP 1177485 becomes vested in the State of New South Wales as Crown Land.

Council's Reference: P. Tipping.

NOTIFICATION OF CLOSING OF ROAD

IN pursuance of the provisions of the Roads Act 1993, the roads hereunder described are closed and the land comprised therein cease to be public roads and the rights of passage and access that previously existed in relation to the roads are extinguished. Upon closing, title to the land comprising the former public road vests in the body specified in the Schedule hereunder.

ANDREW STONER, M.P.,
Minister for Regional Infrastructure and Services

Description

*Parish – Willoughby; County – Cumberland;
Land District – Metropolitan;
Local Government Area – Lane Cove*

Road Closed: Lot 1, DP 1177740, at Lane Cove.

File No.: 10/19074.

Schedule

On closing, title for the land in Lot 1, DP 1177740, remains vested in Lane Cove Council as operational land.

TAMWORTH OFFICE**25-27 Fitzroy Street (PO Box 535), Tamworth NSW 2340****Phone: (02) 6764 5100 Fax: (02) 6766 3805****NOTIFICATION OF CLOSING OF A ROAD**

IN pursuance to the provisions of the Roads Act 1993, the road hereunder specified is closed and the land comprised therein ceases to be a public road and the rights of passage and access that previously existed in relation to the road are extinguished. On road closing, title to the land comprising the former public road vests in the body specified in the Schedule hereunder.

ANDREW STONER, M.P.,
Minister for Regional Infrastructure and Services

Description

Land District – Gunnedah; L.G.A. – Warrumbungle

Road Closed: Lot 1, DP 1172600 at Timbumburi, Parish Timbumburi, County Parry.

File No.: 10/13191.

Schedule

On closing, the land within Lot 1, DP 1172600 remains vested in Tamworth Regional Council as operational land for the purposes of the Local Government Act 1993.

Council's Reference: LF2654.

Description

*Parish – Yarraman; County – Pottinger;
Land District – Quirindi; L.G.A. – Liverpool Plains*

Road Closed: Lot 1, DP 1176524.

File No.: 10/00370.

Schedule

On closing, the land within Lot 1, DP 1176524 remains vested in the State of New South Wales as Crown Land.

ROADS ACT 1993**ORDER****Transfer of Crown Road to Council**

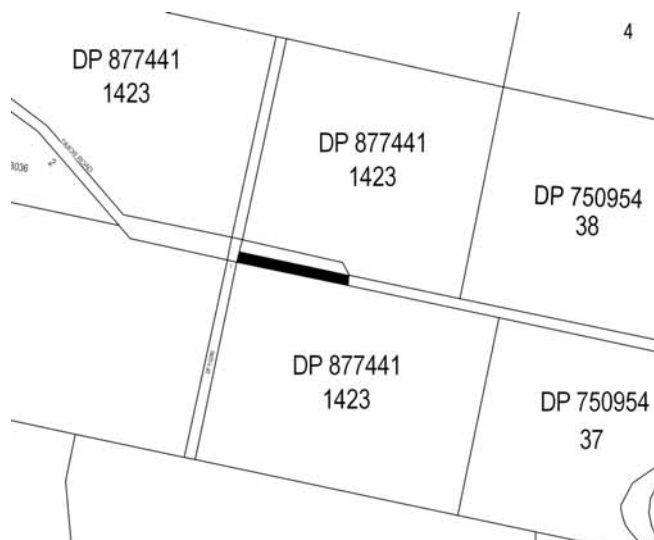
IN pursuance of the provisions of section 151, Roads Act 1993, the Crown public roads specified in Schedule 1 are transferred to the Roads Authority specified in Schedule 2 hereunder, as from the date of publication of this notice and as from that date, the roads specified in Schedule 1 cease to be Crown public roads.

ANDREW STONER, M.P.,
Minister for Regional Infrastructure and Services

SCHEDULE 1

*Parish – Timor; County – Brisbane;
Land District – Quirindi; Locality – Timor*

Western section of road within Lot 1423, DP 877441, shown in black hatching on diagram below.

**SCHEDULE 2**

Roads Authority: Upper Hunter Shire Council.

Council Reference: 396.04.

Crown Lands Reference: 09/05060 – W450869.

TAREE OFFICE
98 Victoria Street (PO Box 440), Taree NSW 2430
Phone: (02) 6591 3500 Fax: (02) 6552 2816

**APPOINTMENT OF ADMINISTRATOR TO
MANAGE A RESERVE TRUST**

PURSUANT to section 117, Crown Lands Act 1989, the person specified in Column 1 of the Schedule hereunder, is appointed as Administrator for the term also specified thereunder, of the reserve trust specified opposite thereto in Column 2, which is trustee of the reserve referred to in Column 3 of the Schedule.

ANDREW STONER, M.P.,
Minister for Regional Infrastructure and Services

SCHEDULE

<i>Column 1</i>	<i>Column 2</i>	<i>Column 3</i>
Jim BOLGER.	Mid North Coast Accommodation Trust.	Reserve No.: Part 79681. Public Purpose: Public recreation and communication facilities. Parish: Forster. Notified: 28 June 1957. Reserve No.: Part 86531. Public Purpose: Public recreation. Parish: Tuncurry. Notified: 17 November 1967. Reserve No.: Part 53519. Public Purpose: Public recreation. Parish: Forster. Notified: 19 September 1919. Reserve No.: Part 85147. Public Purpose: Public recreation. Parish: Fens. Notified: 15 January 1965. Reserve No.: Part 77312. Public Purpose: Camping and public recreation. Parish: Fens. Notified: 31 December 1954. File No.: 10/19709.

For a term commencing 31st August 2012 and expiring 25th February 2013.

ROADS ACT 1993

ORDER

Transfer of Crown Road to a Council

IN pursuance of the provisions of section 151, Roads Act 1993, the Crown road specified in Schedule 1 is transferred to the roads authority specified in Schedule 2 hereunder, as from the date of publication of this notice and as from that date the road specified in Schedule 1 ceases to be a Crown road.

ANDREW STONER, M.P.,
Minister for Regional Infrastructure and Services

SCHEDULE 1

Parish – Marlee; County – Macquarie;
Locality – Strathcedar;
Local Government Area – Greater Taree City Council;
Land District – Taree

Crown public road being Part Moorall Creek Road at Strathcedar being Lot 3, DP 1162901; Council public road west of Cedar Party Creek adjoining Lot 184, DP 754435 and Lot 14, DP 128205.

SCHEDULE 2

Roads Authority: Greater Taree City Council.
File No.: 11/12280.

NOTIFICATION OF CLOSING OF A ROAD

IN pursuance of the provisions of the Roads Act 1993, the road hereunder described is closed and the lands comprised therein cease to be public road and the rights of passage and access that previously existed in relation to the road is extinguished. Upon closing, title to the land, comprising the former public road, vests in the body specified in the Schedule hereunder.

ANDREW STONER, M.P.,
Minister for Regional Infrastructure and Services

Description

Parish – Berrico; County – Gloucester;
Land District – Gloucester; L.G.A. – Gloucester
Road Closed: Lot 1, DP 1172896.
File No.: 10/05332.

Schedule

On closing, the land within Lot 1, DP 1172896 remains vested in the State of New South Wales as Crown Land.

Description

Parish – Dawson; County – Macquarie;
Land District – Taree; L.G.A. – Greater Taree
Road Closed: Lot 2, DP 1177560.
File No.: 10/14033.

Schedule

On closing, the land within Lot 2, DP 1177560 remains vested in the State of New South Wales as Crown Land.

Description

Parish – Dawson; County – Macquarie;
Land District – Taree; L.G.A. – Greater Taree
Road Closed: Lot 5, DP 1177560.
File No.: 10/14034.

Schedule

On closing, the land within Lot 5, DP 1177560 remains vested in the State of New South Wales as Crown Land.

WAGGA WAGGA OFFICE**Corner Johnston and Tarcutta Streets (PO Box 60), Wagga Wagga NSW 2650****Phone: (02) 6937 2700****Fax: (02) 6921 1851****NOTIFICATION OF CLOSING OF A ROAD**

IN pursuance of the provisions of the Roads Act 1993, the road hereunder described is closed and the lands comprised therein cease to be public road and the rights of passage and access that previously existed in relation to the road is extinguished. Upon closing, title to the land, comprising the former public road, vests in the body specified in the Schedule hereunder.

ANDREW STONER, M.P.,
Minister for Regional Infrastructure and Services

Description

*Parish – Gobbagombalin; County – Clarendon;
Land District – Wagga Wagga; L.G.A. – Wagga Wagga*

Road Closed: Lot 1, DP 1154840 subject to easement for electricity purposes 20 wide created by Deposited Plan 1154840).

File No.: 10/04190.

Schedule

On closing, the land within Lot 1, DP 1154840 remains vested in the State of New South Wales as Crown Land.

Description

*Parishes – Kimo and North Gundagai;
County – Clarendon; Land District – Gundagai;
L.G.A. – Gundagai*

Road Closed: Lots 1-8, DP 1177324.

File No.: 12/02950.

Schedule

On closing, the land within Lots 1-4 and 8, DP 1177324 remains vested in the State of New South Wales as Crown Land.

On closing, the land within Lot 5-7, DP 1177342 becomes vested in the State of New South Wales as Crown Land.

Council's Reference: R.8/3 LMP:gp 3 May 2006.

WESTERN REGION OFFICE
45 Wingewarra Street (PO Box 1840), Dubbo NSW 2830
Phone: (02) 6883 5400 Fax: (02) 6884 2067

WITHDRAWAL OF LANDS FROM WESTERN LANDS LEASES

PURSUANT to section 35Q of the Western Lands Act 1901, the lands described in Column 1 of the Schedule hereunder, are withdrawn from the leases described in Column 2 of the Schedule for the purpose of being dedicated as public roads.

ANDREW STONER, M.P.,
Minister for Regional Infrastructure and Services

SCHEDULE

Descriptions

Counties – Gunderbooka and Culgoa; Administrative Districts – Bourke and Brewarrina

<i>Column 1 Land Withdrawn from Lease (Lot/DP)</i>	<i>Column 2 Lease Affected by Withdrawal</i>	<i>Column 3 Title Affected</i>	<i>Column 4 Area Withdrawn from Lease (ha)</i>	<i>Column 5 Lease Area Following Withdrawal (ha)</i>
1/1168473	WLL 2054	4675/767839	10.08	2798
2/1168473	WLL 4513	2340/764304	1.121	2039
3/1168473	WLL 4511	2341/764305	33.08	3356
4/1168473	WLL 4502	2339/764303	2.676	8068
5/1168473	WLL 8108	3951/766424	14.60	11505
6/1168473 8/1168473	WLL 2846	950/761935	65.51	6208
9/1168473	WLL 4505	2329/764293	40.03	3279
11/1168473 15/1168473	WLL 7904	3958/766431	81.65	10495
12/1168473	WLL 5570	3325/765581	2.390	14541
16/1168473	WLL 4506	2344/764308	23.20	3083
17/1168473 27/1168473 28/1168473	WLL 2549	700/761206 5014/769188	53.64	6463
19/1168473	WLL 367	6170/769022	40.29	4065
20/1168473 47/1168473	WLL 1431	6173/769024	48.50	4084
21/1168473 48/1168473 49/1168473	WLL 990	6128/768977	87.26	3518
23/1168473	WLL 5987	3240/765445	46.88	7680
24/1168473	WLL 8284	3950/766423	90.10	11042
25/1168473	WLL 8285	3952/766425	76.78	9554
26/1168473	WLL 8241	3956/766429	47.11	9556
30/1168473 31/1168473	WLL 1402	21/720083 6329/769215	17.15	2936
32/1168473	WLL 1313	4788/767999	20.08	3622
34/1168473	WLL 1042	4786/767999	12.83	4026
35/1168473	WLL 5988	3241/765446	56.93	8361
36/1168473	WLL 11888	6466/767780	7.083	2359

<i>Column 1 Land Withdrawn from Lease (Lot/DP)</i>	<i>Column 2 Lease Affected by Withdrawal</i>	<i>Column 3 Title Affected</i>	<i>Column 4 Area Withdrawn from Lease (ha)</i>	<i>Column 5 Lease Area Following Withdrawal (ha)</i>
37/1168473	WLL 11889	6468/767781	17.69	850
38/1168473	WLL 11891	6469/767781	60.05	6313
39/1168473	WLL 4503	2343/764307	21.70	2091
40/1168473	WLL 2573	572/761571	26.32	5228
41/1168473	WLL 2560	573/761572	26.46	5228
42/1168473 44/1168473	WLL 2923	966/762166	26.12	9113
45/1168473	WLL 8242	3954/766427	52.40	8680
46/1168473	WLL 8184	3955/766428	34.65	7962

File No.: 11/04121.

DEDICATION OF CROWN LAND AS PUBLIC ROAD

PURSUANT to section 12 of the Roads Act 1993, the Crown Land described hereunder is, from the date of publication of this notice, dedicated as public road. The public road hereby dedicated is declared not to be Crown road within the meaning of the Roads Act 1993.

ANDREW STONER, M.P.,
Minister for Regional Infrastructure and Services

Description

*Counties – Gunderbooka and Culgoa;
Administrative Districts – Bourke and Brewarrina*

Lot 1, DP 1168473; Lot 2, DP 1168473; Lot 3, DP 1168473; Lot 4, DP 1168473; Lot 5, DP 1168473; Lot 6, DP 1168473; Lot 8, DP 1168473; Lot 9, DP 1168473; Lot 10, DP 1168473; Lot 11, DP 1168473; Lot 12, DP 1168473; Lot 14, DP 1168473; Lot 15, DP 1168473; Lot 16, DP 1168473; Lot 17, DP 1168473; Lot 18, DP 1168473; Lot 19, DP 1168473; Lot 20, DP 1168473; Lot 21, DP 1168473; Lot 22, DP 1168473; Lot 23, DP 1168473; Lot 24, DP 1168473; Lot 25, DP 1168473; Lot 26, DP 1168473; Lot 27, DP 1168473; Lot 28, DP 1168473; Lot 29, DP 1168473; Lot 30, DP 1168473; Lot 31, DP 1168473; Lot 32, DP 1168473; Lot 33, DP 1168473; Lot 34, DP 1168473; Lot 35, DP 1168473; Lot 36, DP 1168473; Lot 37, DP 1168473; Lot 38, DP 1168473; Lot 39, DP 1168473; Lot 40, DP 1168473; Lot 41, DP 1168473; Lot 42, DP 1168473; Lot 44, DP 1168473; Lot 45, DP 1168473; Lot 46, DP 1168473; Lot 47, DP 1168473; Lot 48, DP 1168473; Lot 49, DP 1168473 and Lot 50, DP 1168473.

Note: Affected parts of Crown Reserves 772, 8518, 13016, 27118, 38038, 873, 27302, 77075, 932, 1226, 1219, 1116, 1225 and 27119 are hereby revoked.

File No.: 11/04121.

APPOINTMENT OF CORPORATION TO MANAGE COMMON TRUST

PURSUANT to Division 1, section 7, subsection (6) of the Commons Management Act 1989, the corporation specified in Column 1 of the Schedule hereunder, is appointed to manage the affairs of the common trust specified opposite thereto in Column 2, which is trustee of the reserve referred to in Column 3 of the Schedule.

ANDREW STONER, M.P.,
Minister for Trade and Investment

SCHEDULE

<i>Column 1</i>	<i>Column 2</i>	<i>Column 3</i>
Brewarrina Shire Council.	Goodooga Common Trust.	Public Purpose: Temporary common, addition and commonage. Reserve No.: 35. Notified: 28 July 1879. Reserve No.: 72693. Notified: 14 May 1948. Reserve No.: 83770. Notified: 16 March 1962. File No.: WL86 R 27-8.

For a term commencing this day.

ALTERATION OF PURPOSE/CONDITIONS OF A WESTERN LANDS LEASE

IT is hereby notified that in pursuance of the provisions of section 18J, Western Lands Act 1901, the purpose and conditions of the undermentioned Western Lands Lease have been altered as shown.

ANDREW STONER, M.P.,
Minister for Regional Infrastructure and Services

*Administrative District – Wentworth;
Shire – Wentworth; Parish of Wannawanna;
County of Tara*

The purpose/conditions of Western Lands Lease 2086, being the land contained within Folio Identifier 370/761109 have been altered from “Grazing” to “Grazing and Recreation” effective from 20 August 2012.

As a consequence of the alteration of purpose and conditions rent will be assessed annually in line with the Western Lands Act 1901 and Regulations.

The conditions previously annexed to Western Lands Lease 2086 have been revoked and the following conditions have been annexed thereto.

CONDITIONS AND RESERVATIONS ATTACHED TO
WESTERN LANDS LEASE No. 2086

- (1) In the conditions annexed to the lease, the expression “the Minister” means the Minister administering the Western Lands Act 1901, and any power, authority, duty or function conferred or imposed upon the Minister by or under those conditions may be exercised or performed either by the Minister or by such officers of the Department of Primary Industries as the Minister may from time to time approve.
- (2) In these conditions and reservations the expression “the Commissioner” means the Commissioner charged with the administration of the Western Lands Act 1901 (“the Act”) in accordance with section 4(2) of the Act.
- (3)
 - (a) For the purposes of this clause the term Lessor shall include Her Majesty the Queen Her Heirs and Successors the Minister and the agents servants employees and contractors of the Lessor Her Majesty Her Majesty’s Heirs and Successors and the Minister.
 - (b) The lessee covenants with the Lessor to indemnify and keep indemnified the Lessor from and against all claims for injury loss or damage suffered by any person or body using or being in or upon the Premises or any adjoining land or premises of the Lessor arising out of the Holder’s use of the Premises and against all liabilities for costs charges and expenses incurred by the Lessor in respect of the claim of any such person or body except to the extent that any such claims and demands arise wholly from any negligence or wilful act or omission on the part of the Lessor.
 - (c) The indemnity contained in this clause applies notwithstanding that this Lease authorised or required the lessee to undertake or perform the activity giving rise to any claim for injury loss or damage.
 - (d) The lessee expressly agrees that the obligations of the Holder under this clause shall continue after the expiration or sooner determination of this Lease in respect of any act deed matter or thing occurring before such expiration or determination.
- (4) The rent of the lease shall be assessed in accordance with Part 6 of the Western Lands Act 1901.
- (5) The rent shall be due and payable annually in advance on 1 July in each year.
- (6)
 - (a) “GST” means any tax on goods and/or services, including any value-added tax, broad-based consumption tax or other similar tax introduced in Australia.
“GST law” includes any Act, order, ruling or regulation, which imposes or otherwise deals with the administration or imposition of a GST in Australia.
- (b) Notwithstanding any other provision of this Agreement:
 - (i) If a GST applies to any supply made by either party under or in connection with this Agreement, the consideration provided or to be provided for that supply will be increased by an amount equal to the GST liability properly incurred by the party making the supply.
 - (ii) If the imposition of a GST or any subsequent change in the GST law is accompanied by or undertaken in connection with the abolition of or reduction in any existing taxes, duties or statutory charges (in this clause “taxes”), the consideration payable by the recipient of the supply made under this Agreement will be reduced by the actual costs of the party making the supply that are reduced directly or indirectly as a consequence of the abolition of or reduction in taxes.
- (7) The lessee must pay all rates and taxes assessed on or in respect of the land leased during the currency of the lease.
- (8) The lessee must hold and use the land leased bona fide for the lessee’s own exclusive benefit and must not transfer, convey or assign the land or any portion thereof without having first obtained the written consent of the Minister.
- (9) The lessee must not enter into a sublease of the land leased unless the sublease specifies the purpose for which the land may be used under the sublease, and it is a purpose which is consistent with the purpose for which the land may be used under this lease.
- (10) If the lessee enters into a sublease of the land leased, the lessee must notify the Commissioner of the granting of the sublease within 28 days after it is granted.
- (11) The land leased must be used only for the purpose of **Grazing and Recreation**.
- (12) The lessee must maintain and keep in reasonable repair all improvements on the land leased during the currency of the lease and shall permit the Minister or the Commissioner or any person authorised by the Minister or the Commissioner at all times to enter upon and examine the whole or any part of the land leased and the buildings or other improvements thereon.
- (13) The lessee must ensure that the land leased is kept in a neat and tidy condition to the satisfaction of the Commissioner and not permit refuse to accumulate on the land.
- (14) Upon termination or forfeiture of the lease the Commissioner may direct that the former lessee remove any structure or material from the land at his own cost and without compensation. Where such a direction has been given the former lessee must leave the land in a clean and tidy condition free from rubbish and debris.
- (15) The lessee must, within 1 year from the date of commencement of the lease or such further period as the Commissioner may allow, enclose the land leased, either separately or conjointly with other lands held in the same interest, with a suitable fence to the satisfaction of the Commissioner.

- (16) The lessee must not obstruct or interfere with any reserves, roads or tracks on the land leased, or the use thereof by any person.
- (17) The lessee must erect gates on roads within the land leased when and where directed by the Commissioner for public use and must maintain those gates together with approaches thereto in good order to the satisfaction of the Commissioner.
- (18) Any part of a reserve for travelling stock, camping or water supply within the land leased must, during the whole currency of the lease, be open to the use of bona fide travellers, travelling stock, teamsters and carriers without interference or annoyance by the lessee and the lessee must post in a conspicuous place on the reserve a notice board indicating for public information the purpose of such reserve and, in fencing the land leased, the lessee must provide gates and other facilities for the entrance and exit of travelling stock, teamsters and others. The notice board, gates and facilities must be erected and maintained to the satisfaction of the Commissioner. The lessee must not overstock, wholly or in part, the areas leased within the reserve, the decision as to overstocking resting with the Commissioner.
- (19) The Crown shall not be responsible to the lessee or the lessee's successors in title for provision of access to the land leased.
- (20) The lessee must comply with requirements of section 18DA of the Western Lands Act 1901 which provides that except in circumstances referred to in subsection (3) of that section, cultivation of the land leased or occupied may not be carried out unless the written consent of the Department has first been obtained and any condition to which the consent is subject under sub section (6) is complied with.
- (21) The lessee must undertake any fuel management and/or provision of fire trail access in accordance with fire mitigation measures to the satisfaction of the NSW Rural Fire Service.
- (22) The lessee must, as the Commissioner may from time to time direct, foster and cultivate on the land leased such edible shrubs and plants as the Commissioner may consider can be advantageously and successfully cultivated.
- (23) Whenever so directed by the Commissioner, the lessee must, on such part or parts of the land leased as shall be specified in the direction, carry out agricultural practices, or refrain from agricultural practices, of such types and for such periods as the Commissioner may in the direction specify.
- (24) The lessee must not overstock, or permit or allow to be overstocked, the land leased and the decision of the Commissioner as to what constitutes overstocking shall be final and the lessee must comply with any directions of the Commissioner to prevent or discontinue overstocking.
- (25) The lessee must, if the Commissioner so directs, prevent the use by stock of any part of the land leased for such periods as the Commissioner considers necessary to permit of the natural reseeding and regeneration of vegetation and, for that purpose, the lessee must erect within the time appointed by the Commissioner such fencing as the Commissioner may consider necessary
- (26) The lessee must furnish such returns and statements as the Commissioner may from time to time require on any matter connected with the land leased or any other land (whether within or outside the Western Division) in which the lessee has an interest.
- (27) The lessee must, within such time as may be specified by the Commissioner take such steps and measures as the Commissioner shall direct to destroy vermin and such animals and weeds as may, under any Act, from time to time be declared (by declaration covering the land leased) noxious in the Gazette and must keep the land free of such vermin and noxious animals and weeds during the currency of the lease to the satisfaction of the Commissioner.
- (28) The lessee must not remove or permit any person to remove gravel, stone, clay, shells or other material for the purpose of sale from the land leased unless the lessee or the person is the holder of a quarry license under regulations made under the Crown Lands Act 1989 or, in respect of land in a State forest, unless the lessee or the person is the holder of a forest materials licence under the Forestry Act 1916, and has obtained the special authority of the Minister to operate on the land, but the lessee may, with the approval of the Commissioner, take from the land such gravel, stone, clay, shells or other material for building and other purposes upon the land as may be required by the lessee.
- (29) The lessee must comply with the provisions of the Local Government Act 1993, and of the ordinances made thereunder.
- (31) If the lessee is an Australian registered company then the following conditions shall apply:
- I The Lessee will advise the Commissioner of the name, address and telephone number of the Lessee's company secretary, that person being a person nominated as a representative of the company in respect of any dealings to be had with the company. The Lessee agrees to advise the Commissioner of any changes in these details.
 - II Any change in the shareholding of the Lessee's company which alters its effective control of the lease from that previously known to the Commissioner shall be deemed an assignment by the Lessee.
 - III Where any notice or other communication is required to be served or given or which may be convenient to be served or given under or in connection with this lease it shall be sufficiently executed if it is signed by the company secretary.
 - IV A copy of the company's annual financial balance sheet or other financial statement which gives a true and fair view of the company's state of affairs as at the end of each financial year is to be submitted to the Commissioner upon request.

WATER

WATER ACT 1912

AN application for a licence under Part 2, section 10 of the Water Act 1912, within a proclaimed (declared) local area under section 5 (4) has been received as follows:

Malcolm David HARRIS for a pump on the Boomi River on Lot 10, DP 859316, Parish of Narrawall, County of Benarba, for irrigation of 100 hectares (new licence – permanent transfer of an existing Boomi River “B” class entitlement). (Reference: 90SL101083).

THE ARMIDALE MANAGEMENT DEVELOPMENT CENTRE PTY LIMITED for an existing dam, pump and diversion pipe on Pine Creek on Lots 10 and 11, DP 883704 and an existing bywash dam and pump on an unnamed watercourse on Lot 10, DP 883704, both Parish Looanga, County Inglis, for conservation of water and water supply for stock purposes and irrigation (replacement of 90SA11696 – additional dam and pump – no increase in entitlement). (Reference: 90SL101089).

Any inquiries should be directed to (02) 6701 9620.

Written objections, from any local occupier or statutory authority, specifying grounds and how their interests are affected, must be lodged with the NSW Office of Water, PO Box 550, Tamworth NSW 2340, within 28 days of this publication.

DAVID THOMAS,
Senior Licensing Officer

WATER ACT 1912

AN application for an approval under Part 8 of the Water Act 1912, being within a proclaimed (declared) local area under section 5 (4) of the said Act, has been received as follows:

TOMINGLEY GOLD OPERATIONS PTY LTD for a earthen levee on Gundong Creek, Lots 103, 104 and 105, DP 755110, Parish of Gundong, County of Narromine, for prevention of inundation of land by floodwater (new licence). (Reference: 80CW809661).

AN application for a licence under section 10 of Part 2 of the Water Act 1912, being within a proclaimed (declared) local area under section 5(4) of the said Act, has been received as follows:

TOMINGLEY GOLD OPERATIONS PTY LTD for a cutting on Gundong Creek, Lot 2, DP 1151198; Lots 95, 112 and 122, DP 755110 and Lot 1, DP 254193, Parish of Gundong, County of Narromine, for the purpose of changing course of a river (new licence). (Reference: 80SL96373).

Any inquiries should be directed to (02) 6841 7414.

Written objections, from any local occupier or statutory authority, specifying grounds and how their interests are affected, must be lodged with the NSW Office of Water, PO Box 717, Dubbo NSW 2830, within 28 days of this publication.

RICHARD WHEATLEY,
Senior Licensing Officer

WATER ACT 1912

AN application under section 167 (1) of Part 8 of the Water Act 1912, being within a proclaimed (declared) local area under section 5 (4), has been received as follows:

Terrance Norman BROWN and Denice Gaye BROWN for a levee (existing) on the Niemur River on Lot 19, DP 756591, Parish Wetuppa, County Wakool, for the prevention of inundation of land by floodwaters. (Reference: 50CW805739).

Any inquiries should be directed to (03) 5898 3900.

Written objections, from any local occupier or statutory authority, specifying grounds and how their interests are affected, must be lodged with the NSW Office of Water, PO Box 205, Deniliquin NSW 2710, within 28 days of the date of this publication.

LINDSAY HOLDEN,
Senior Licensing Officer

WATER ACT 1912

APPLICATIONs for controlled works, under section 167 of Part 8 of the Water Act 1912, being within a proclaimed (declared) local area under section 5 (4) has been received as follows:

TURKEY LAGOON PTY LTD and Graham COOK for controlled works consisting of levees, channels and off river storage on the Macintyre Floodplain. On Lots 17, 18, 61, 70, 76, 79, 80 and 83, DP 756009; Lot 1, DP 46681; Lot 19, DP 818173, Parish Merriwa, County Staphylton; Lot 1, DP 1000499 and Lot 19, DP 818173, Parish Mayne, County Staphylton, on the property known as “Turkey Lagoon” Boggabilla. For the prevention of inundation of floodwaters, irrigation and drainage development and the storage of water (new approval – replacement of existing application 90CW810716 – extension of levee system). (Reference: 90CW810999).

W. TAYLOR PTY LTD for controlled works consisting of levees, channels and off river storages on the Macintyre Floodplain. On Lots 26, 26, 30, 31, 32, 33, 34, 35, 36, 37, 38, 39, 40, 41, 43, 44 and 79, DP 756013, Parish Morella, County Staphylton and Lot 11 and 14, DP 756007, Parish Mayne, County Staphylton, on the property known as “Morella Lagoon” Boggabilla. For the prevention of inundation of floodwaters, irrigation and drainage development and the storage of water (new approval – replacement of existing applications 90CW800681 and 90CW801469 – extension of levee system). (Reference: 90CW810997).

PARKDALE HOLDINGS PTY LTD for controlled works consisting of levees, channels and off river storages on the Macintyre Floodplain. On Lots 4, 10, 15, 16, 17, 18, 26, 27, 28, 77, 78, 79, 80, 92, 93, 94, 95, 96, 97, 98, 99, 100, 120 and 176, DP 756007; Lot 1, DP 821230 and Lot 2, DP 538121, Parish Mayne, County Staphylton and Lot 12, 19, 68, 69, 71 and 73, DP 756009, Parish Merriwa, County Staphylton, on the property known as “Parkdale”. For the prevention of inundation of floodwaters, irrigation and drainage development and the storage of water (new approval – replacement of approval 90CW800458 – extension of levee system). (Reference: 90CW810998).

Any inquiries should be directed to (02) 6799 6621.

Written objections, from any local occupier or statutory authority, specifying grounds and how their interests are affected, must be lodged with the NSW Office of Water, PO Box 382, Narrabri NSW 2340, within 28 days of this publication.

ROBERT ALBERT,
Licensing Manager

Other Notices

ASSOCIATIONS INCORPORATION ACT 2009

Reinstatement of Cancelled Association pursuant to Section 84

TAKE notice that the incorporation of THE NSW BILINGUAL EDUCATORS ASSOCIATION INCORPORATED, INC9888545, cancelled on 29 June 2012, is reinstated pursuant to section 84 of the Associations Incorporation Act 2009.

Dated this 27th day August of 2012.

ROBYNE LUNNEY,
Manager, Case Management,
Registry of Co-operatives & Associations,
NSW Fair Trading,
Department of Finance & Services

ASSOCIATIONS INCORPORATION ACT 2009

Reinstatement of Cancelled Association pursuant to Section 84

TAKE notice that the incorporation of DUBBO REVIVAL CENTRE INC, Y1259817, cancelled on 28 November 2008, is reinstated pursuant to section 84 of the Associations Incorporation Act 2009.

Dated this 27th day August of 2012.

ROBYNE LUNNEY,
Manager, Case Management,
Registry of Co-operatives & Associations,
NSW Fair Trading,
Department of Finance & Services

ASSOCIATIONS INCORPORATION ACT 2009

Reinstatement of Cancelled Association pursuant to Section 84

TAKE notice that the incorporation of WAT LAO BUDDHA METTA BUDDHIST SOCIETY OF NSW INC, Y1656610, cancelled on 20 March 2009, is reinstated pursuant to section 84 of the Associations Incorporation Act 2009.

Dated this 27th day August of 2012.

ROBYNE LUNNEY,
Manager, Case Management,
Registry of Co-operatives & Associations,
NSW Fair Trading,
Department of Finance & Services

ASSOCIATIONS INCORPORATION ACT 2009

Cancellation of Incorporation Pursuant to Section 76

TAKE notice that the incorporation of the following association is cancelled by this notice pursuant to section 76 of the Associations Incorporation Act 2009.

Razorback Rangers Mountain Bike Club Incorporated
– Y2815417
Qing Hua Chinese Language School Incorporated –
Y2454914

Euraba Mungindi Aboriginal Health Service
Incorporated – Inc9876785

Menindee Aboriginal Health Service Inc –
Inc9874971

Pooncarie Telecentre Incorporated – Inc9876298

Ski Racing [NSW] Incorporated – Inc9882298

Australian Cities Alive Incorporated – Y1940225

Brazil Foundation of Australia Incorporated –
Inc9893248

High Performance Ultimate Car Club Inc –
Inc9891783

"Art After Dark" Organising Committee Incorporated
– Inc9881644

Cancellation is effective as at the date of gazettal.

Dated this 21st day of August 2012.

ROBYNE LUNNEY,
Delegate of the Commissioner,
NSW Fair Trading,
Department of Finance & Services

DIRECTOR OF PUBLIC PROSECUTIONS ACT 1986

ORDER

IN pursuance of section 11 (2) of the Director of Public Prosecutions Act 1986, I do by this my Order:

- (1) Revoke all previous orders; and
- (2) Authorise the Director of Public Prosecutions to consent to prosecutions for the offences in respect of which my consent is required under the following provisions:
 - **Conveyancing Act 1919** – section 183
Prosecution of vendor or mortgagor for fraudulent concealment of deeds or falsifying pedigree.
 - **Crimes Act 1900** – sections 66F (8), 78F, 249E and clause 55 of Schedule 11:
 - 66F – Sexual offences – cognitive impairment.
 - Section 78F Incest – requires consent to be given before prosecutions for offences under sections 78A (incest) or 78B (attempted incest);
 - 249E – corrupt benefits for trustees;
 - Clause 55 of Schedule 11 – No prosecution for an offence under section 78H, 78I, 78K, 78L, 78M, 78N, 78O or 78Q or for an offence of attempting, or of conspiracy or incitement, to commit an offence under any of those sections shall, if the accused was at the time of the alleged offence under the age of 18 years, be commenced without the sanction of the Attorney General.
 - Section 316 (1) – concealing serious indictable offence.
 - **Real Property Act 1900** – section 143
All offences against the provisions of the Real Property Act may be prosecuted, and all penalties or sums of money imposed or declared to be due or owing by or under the provisions of the same may be sued for and recovered in the name of the Attorney General.

- **Oaths Act 1900** – section 33 (2)

Any person who, having made an affidavit under section 32 Oaths Act, wilfully makes a false statement in the affidavit, knowing the statement to be false, is taken to be guilty of perjury if the making of the statement, had it been on oath, would by law have been perjury.

No prosecution for an offence referred to in subsection (1) is to be commenced without the sanction of the Attorney General.

- **Anti-Discrimination Act 1977** – section 20D

A person shall not be prosecuted for serious racial vilification under this section unless the Attorney General has consented to the prosecution.

- **Anti-Discrimination Act 1977** – section 49ZTA

A person shall not be prosecuted for an offence of homosexual vilification under this section unless the Attorney General has consented to the prosecution.

- **Anti-Discrimination Act 1977** – section 49ZXC

A person shall not be prosecuted for an offence of HIV/AIDS vilification under this section unless the Attorney General has consented to the prosecution.

- **Surveillance Devices Act 2007** – section 56

Proceedings for an offence against this Act or the regulations may not be instituted without the written consent of the Attorney General.

Dated this 22nd day of August 2012.

GREG SMITH, S.C., M.P.,
Attorney General

DORMANT FUNDS ACT 1942

In re the Fund Known as NSW Police
Historical Society Fund

NOTICE is hereby given that proposals have been formulated under the Dormant Funds Act 1942, in relation to the above Fund and that a copy of such proposals may be inspected at the office of the Commissioner at the office of NSW Trustee & Guardian, 19 O'Connell Street, Sydney. Any person interested in the administration, utilisation or application of the said Dormant Fund may on or before 30 days from the publication of this notice deliver or send to the Commissioner at 19 O'Connell Street, Sydney, a request in writing that the proposals be referred by the Commissioner to the Charity Referees. Such request must state an address for service of notices on the person by whom the request is made.

Dated at Sydney this 20th day of August 2012.

IMELDA DODDS,
Commissioner of Dormant Funds

19 O'Connell Street,
Sydney NSW 2000

HERITAGE ACT 1977

Notice of Listing on the State Heritage Register
under Section 37 (1) (b)

Cintra – House, Garden and Stables
4 Regent Street, Maitland

SHR No. 1892

IN pursuance of section 37 (1) (b) of the Heritage Act 1977, the Heritage Council gives notice that the item of environmental heritage specified in Schedule "A" has been listed on the State Heritage Register in accordance with the decision of the Minister for Heritage to direct the listing. This listing applies to the curtilage or site of the item, being the land described in Schedule "B".

Heritage Council of New South Wales

SCHEDULE "A"

The item known as the Cintra – House, Garden and Stables, situated on the land described in Schedule "B".

SCHEDULE "B"

All those pieces or parcels of land known as Lot 1, DP996931, in Parish of Maitland, County of Northumberland, shown on the plan catalogued HC 2553 in the office of the Heritage Council of New South Wales.

HERITAGE ACT 1977

Notice of Listing on the State Heritage Register
under Section 37 (1) (b)

St Peter's Anglican Church Group and
Glebe Cemetery East Maitland

SHR No. 1886

IN pursuance of section 37 (1) (b) of the Heritage Act 1977 (NSW), the Heritage Council gives notice that the item of environmental heritage specified in Schedule "A" has been listed on the State Heritage Register in accordance with the decision of the Minister for Heritage to direct the listing. This listing applies to the curtilage or site of the item, being the land described in Schedule "B".

Heritage Council of New South Wales

SCHEDULE "A"

The item known as St Peter's Anglican Church Group and Glebe Cemetery, situated on the land described in Schedule "B".

SCHEDULE "B"

All those pieces or parcels of land known as Lot 7316, DP 1162547; Lot 196, DP 755237 and Lots 7, 8 and 9, DP 758374, the length and breadth of William Street, between the Newcastle Road and the west side of Brisbane Street, Parish of Gosforth, County of Northumberland, shown on the plan catalogued HC 2550 in the office of the Heritage Council of New South Wales.

PARENTS AND CITIZENS ASSOCIATIONS INCORPORATION ACT 1976

Incorporation of Parents and Citizens Associations

THE following association is hereby incorporated under the Parents and Citizens Associations Incorporation Act 1976.

1. Kincumber Public School
2. Northmead Primary School
3. Woronora River Public School

ADRIAN PICCOLI, M.P.,
Minister for Education

PESTICIDES ACT 1999

Notice under Section 48 (4)

NOTICE is hereby given, pursuant to section 48 (4) of the Pesticides Act 1999, that I have granted a Pilot (Pesticide Rating) Licence, particulars of which are stated in the Schedule.

SEAN NUNAN,
Team Leader,
Licensing and Registration
(by delegation)

SCHEDULE

Pilot (Pesticide Rating) Licence

<i>Name and address of licensee</i>	<i>Date of granting of licence</i>
Joshua BRYANT, PO Box 1144, Mudgee NSW 2850	28 August 2012

PESTICIDES ACT 1999

Notice under Section 48 (4)

NOTICE is hereby given, pursuant to section 48 (4) of the Pesticides Act 1999, that I have re-issued an Aircraft (Pesticide Applicator) Licence, particulars of which are stated in the Schedule. This licence replaces the licence issued to MAS AGWORK on 4 July 1997.

SEAN NUNAN,
Team Leader, Chemicals and Radiation Licensing,
Hazardous Materials, Chemicals and Radiation Section,
Environment Protection Authority
by delegation

SCHEDULE

Aircraft (Pesticide Applicator) Licence

<i>Name and address of licensee</i>	<i>Date of re-issuing of licence</i>
NEIT PTY LTD & PEKART PTY LTD, PO Box 68, Coleambally NSW 2707	29 August 2012. This licence replaces the licence issued to MAS AGWORK on 4 July 1997.

POISONS AND THERAPEUTIC GOODS ACT 1966

Order Under Clause 175 (1)

Poisons and Therapeutic Goods Regulation 2008

Withdrawal of Drug Authority

IN accordance with the provisions of clause 175 (1) of the Poisons and Therapeutic Goods Regulation 2008 an Order has been made on Shaun Rochford of 27 Belar Avenue, Terrigal NSW 2260 prohibiting him until further notice, as a person employed by the Ambulance Service of New South Wales as an ambulance officer, and who is approved for the time being by the Director-General for the purpose of clause 101 (1) (g) of the Regulation from having possession of and supplying drugs of addiction as authorised by clause 101 (1) (g) of the Regulation.

This Order is to take effect on and from 24 August 2012.

Dated at Sydney, 20 August 2012.

Dr MARY FOLEY,
Director-General,
Ministry of Health, New South Wales

RETENTION OF TITLE

HER Excellency the Governor, by deputation of Her Majesty the Queen, has been pleased to approve of the retention of the title "Honourable" by former Justice Tricia Marie KAVANAGH, who served as Deputy President of the Industrial Relations Commission of New South Wales from 26 June 1998 until her retirement on 28 June 2012.

RETENTION OF TITLE

HER Excellency the Governor, by deputation of Her Majesty the Queen, has been pleased to approve of the retention of the title "Honourable" by former Justice Francis MARKS, who served as Deputy President of the Industrial Relations Commission of New South Wales from 15 February 1993 until his retirement on 30 June 2012.

RETENTION OF TITLE

HER Excellency the Governor, by deputation of Her Majesty the Queen, has been pleased to approve of the retention of the title "Honourable" by former Justice Anthony Gerard Joseph WHEALY, who served as a Judge of the Supreme Court of New South Wales from 26 June 2000 until his retirement on 29 June 2012.

RURAL FIRES ACT 1997

Local Bush Fire Danger Period Variation

PURSUANT to section 82 of the Rural Fires Act 1997, as amended, the Commissioner of the NSW Rural Fire Service, following consultation with the local stakeholders, declares the following Local Bush Fire Danger Period Variation:

Area of Variation:

Castlereagh incorporating:
Gilgandra Shire Council
Warrumbungle Shire Council

The Local Bush Fire Danger period has been extended for the period 1 September until 30 September 2012.

During this period permits pursuant to section 87 of the Rural Fires Act 1997, as amended, will be required for the lighting of fire for the purposes of land clearance or fire breaks.

ROB ROGERS, A.F.S.M.,
Deputy Commissioner,
Director, Operational Services
(Delegate)

RURAL FIRES ACT 1997

Local Bush Fire Danger Period Variation

PURSUANT to section 82 of the Rural Fires Act 1997, as amended, the Commissioner of the NSW Rural Fire Service, following consultation with the local stakeholders, declares the following Local Bush Fire Danger Period Variation:

Area of Variation:

Liverpool Range incorporating:

Gunnedah Shire Council
Liverpool Plains Shire Council
Upper Hunter Shire Council

The Local Bush Fire Danger period has been extended for the period 1 September until 30 September 2012.

During this period permits pursuant to section 87 of the Rural Fires Act 1997, as amended, will be required for the lighting of fire for the purposes of land clearance or fire breaks.

ROB ROGERS, A.F.S.M.,
Deputy Commissioner,
Director, Operational Services
(Delegate)

RURAL FIRES ACT 1997

Local Bush Fire Danger Period Variation

PURSUANT to section 82 of the Rural Fires Act 1997, as amended, the Commissioner of the NSW Rural Fire Service, following consultation with the local stakeholders, declares the following Local Bush Fire Danger Period Variation:

Area of Variation:

Namoi Gwydir incorporating:

Gwydir Shire Council
Moree Plains Shire Council
Narrabri Shire Council

The Local Bush Fire Danger period has been extended for the period 1 September until 30 September 2012.

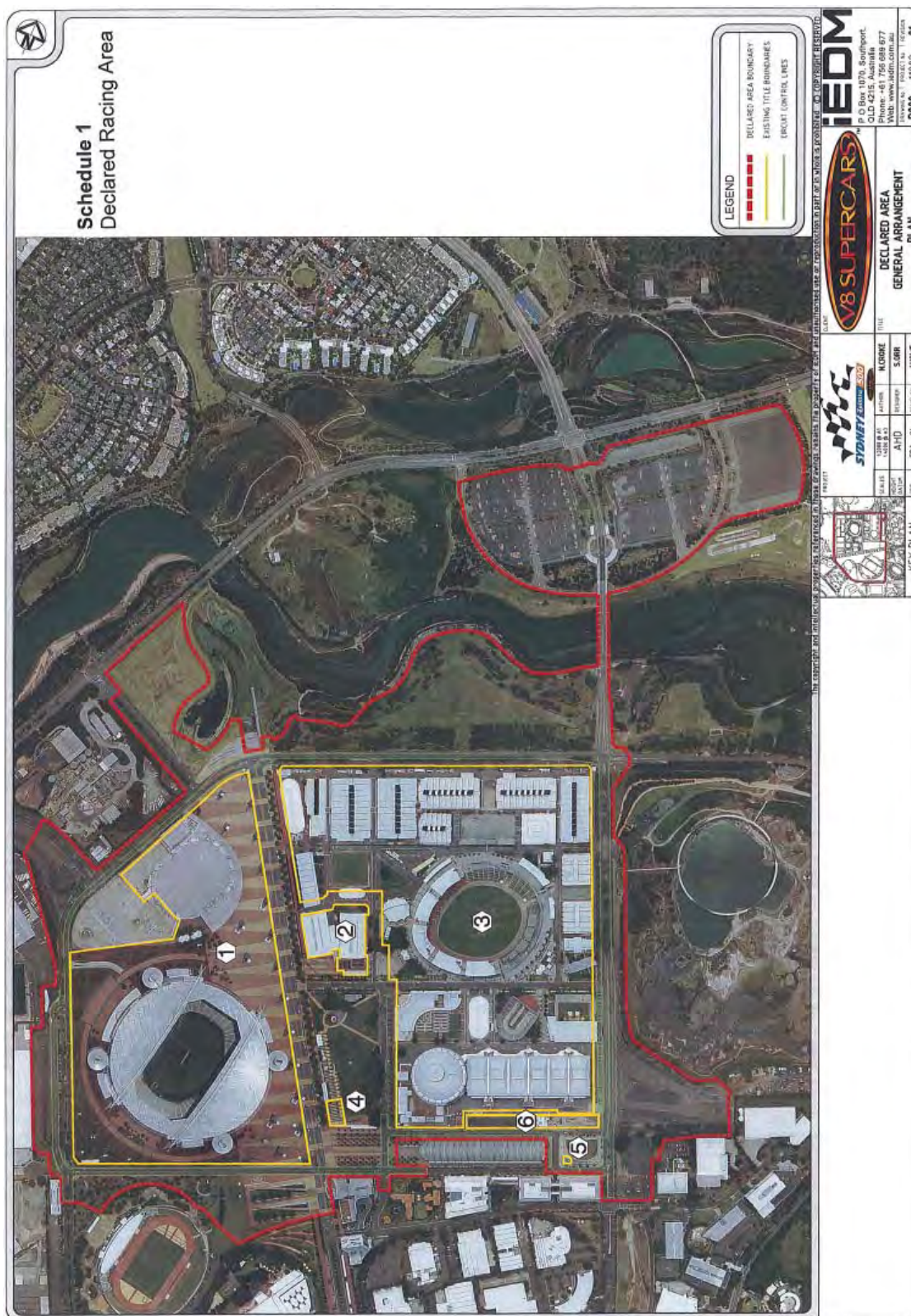
During this period permits pursuant to section 87 of the Rural Fires Act 1997, as amended, will be required for the lighting of fire for the purposes of land clearance or fire breaks.

ROB ROGERS, A.F.S.M.,
Deputy Commissioner,
Director, Operational Services
(Delegate)

Order Nominating the Declared Racing Area under the Homebush Motor Racing (Sydney 400) Act 2008

Dated this 20th day of August 2012.

GEORGE SOURIS, M.P.,
Minister for Tourism, Major Events, Hospitality and Racing and Minister for the Arts



HOMEBUSH MOTOR RACING (SYDNEY 400) ACT 2008

Order Designating Homebush Motor Racing Period under the Homebush Motor Racing (Sydney 400) Act 2008

I, George Souris, Minister for Tourism, Major Events, Hospitality and Racing and Minister for the Arts, in pursuance of section 12(2) of the Homebush Motor Racing (Sydney 400) Act 2008 (the Act) and having sought and obtained the advice of the Homebush Motor Racing Authority, do, by this Order designate the following as the period during which a Homebush motor race may be conducted at Sydney Olympic Park under the Act:

12:00 midnight Wednesday 28 November 2012 to 6:00 pm Monday 3 December 2012.

Dated this 20th day of August 2012.

GEORGE SOURIS, M.P.,
Minister for Tourism, Major Events, Hospitality and Racing and Minister for the Arts

HOMEBUSH MOTOR RACING (SYDNEY 400) ACT 2008

Order Approving Person Who May Apply for an Authorisation to Conduct a Race under the
Homebush Motor Racing (Sydney 400) Act 2008

I, George Souris, Minister for Tourism, Major Events, Hospitality and Racing and Minister for the Arts, in pursuance of section 13 (1) of the Homebush Motor Racing (Sydney 400) Act 2008 (the Act) and having sought and obtained the advice of the Homebush Motor Racing Authority, do, by this Order approve the person described in Schedule 1 as the person who may apply for an authorisation under section 15 of the Act.

The application must be made after 1 July 2012 for the Homebush Motor Racing Period for 2012.

The application must be made in a manner which is generally in accordance with Schedule 2.

Dated this 20th day of August 2012.

GEORGE SOURIS, M.P.,
Minister for Tourism, Major Events, Hospitality and Racing and Minister for the Arts

SCHEDULE 1

V8 Supercars Australia Pty Ltd

SCHEDULE 2

Any application for an authorisation under section 15 of the Act must:

1. Be in writing
2. Be delivered to the Homebush Motor Racing Authority
3. Indicate the year or years for which the authorisation is sought
4. Contain details of all aspects of the proposed Homebush motor race, for which authorisation is sought, including all races, other events and ancillary activities, to the degree of detail as may reasonably be required by the Authority, including:
 - (a) A detailed description of all races, other events and ancillary activities
 - (b) Details of the type, number, duration and times of all races, other events and ancillary activities
 - (c) A detailed schedule of all activities proposed during the whole of the race period (within the meaning of that term in section 12 (2) of the Act)
 - (d) Detailed plans and diagrams showing the layout of all races, other events and ancillary activities
 - (e) Detailed access and traffic management plans showing how pedestrian, vehicular and other traffic will be managed, having regard to public safety and convenience, including:
 - (i) limiting access to the track, pits and other areas to be used by racing cars, and associated personnel and equipment
 - (ii) access to public areas
 - (iii) crowd control generally
 - (iv) traffic generated by patrons
 - (v) public parking and access to nearby public roads
 - (vi) access to public transport
 - (vii) access in and about the declared racing area generally; and
 - (viii) access in and about areas nearby to the declared racing area including any leased area.

HOMEBUSH MOTOR RACING (SYDNEY 400) ACT 2008**Order to Declare Prohibition of Certain Advertising on Buildings and Structures under the Homebush Motor Racing (Sydney 400) Act 2008**

I, George Souris, Minister for Tourism, Major Events, Hospitality and Racing and Minister for the Arts, in pursuance of section 37 (1) of the Homebush Motor Racing (Sydney 400) Act 2008 (the Act) and having sought and obtained the advice of the Homebush Motor Racing Authority, do, by this Order declare the area hatched in red and bounded by the outside of the red line in Schedule 1, to be an advertising controlled site at Sydney Olympic Park under the provisions of section 37 of the Act, for the period 30 November to 3 December 2012, inclusive.

Dated this 20th day of August 2012.

GEORGE SOURIS, M.P.,
Minister for Tourism, Major Events, Hospitality and Racing and Minister for the Arts

Schedule 1

RACING ADMINISTRATION ACT 1998

ORDER

Declared Betting Events

I, GEORGE SOURIS, M.P., Minister for Tourism, Major Events, Hospitality and Racing and Minister for the Arts, in pursuance of sections 18 and 20 of the Racing Administration Act 1998, hereby amend the Schedule of Sports Betting Events and Approved Forms of Betting published in the *New South Wales Government Gazette* of 4 March 2011 (as amended), by deleting the existing Schedule and replacing it with the following amended Schedule.

Dated at Sydney, this 6th day of August 2012.

GEORGE SOURIS, M.P.,
Minister for Tourism, Major Events,
Hospitality and Racing and Minister for the Arts

SCHEDULE OF DECLARED BETTING EVENTS AND APPROVED FORMS OF BETTING
(under sections 18 and 20 of Racing Administration Act 1998)
(last updated August 2012)

<i>Sport or Other Event</i>	<i>Sporting or Other Events or Classes of Sporting or Other Events</i>	<i>Approved Forms of Betting</i>		
1	ATHLETICS	World Athletic Championships	Winner/placegetter in event or stage	
		Australian Open Championships	Quinella	
		State Open Championships	Exacta	
		Professional events sanctioned by an Australian Professional Athletics Assoc'n	Trifecta	
		Grand Prix events sanctioned by International Amateur Athletics Federation	Favourite Out betting	
		Commonwealth Games	Field Betting	
		Goodwill Games	Head to head	
		Olympic Games	Best of the select (Group betting)	
		Tournaments or Events sanctioned by official international or national governing bodies and affiliates.	Individual Performance	
			Reach final/specified level	
2	AUSTRALIAN OF THE YEAR	Australian of the Year	Winner	
		Senior Australian of the Year	Favourite Out Betting	
		Young Australian of the Year	Individual Performance	
		Australia's Local Hero		
3	AUSTRALIAN RULES FOOTBALL	Australian Football League Premiership Competition	Head to Head	Match
		Australian State Premier Division AFL Competitions	Handicap	Match/Premiership/Series
		State of Origin Games	Margins	Match
		AFL Official Pre-season Competition	Line	Match
		Most Valuable Player awards sanctioned by AFL	Team to lead at end of specified time period(s)	Match
		International Rules Matches (Aust v Ireland)	Match score total	Match
		Tournaments or Events sanctioned by official international or national governing bodies and affiliates.	Match score competitor	Match
			Match score exact	Match

<i>Sport or Other Event</i>	<i>Sporting or Other Events or Classes of Sporting or Other Events</i>	<i>Approved Forms of Betting</i>	
		Scoring methods (Ranges)	Match
		First, next or last specific scoring play/scorer	Match
		Individual Performance	Match/Premiership/Series
		Number of Disposals	Match
		Match Period	Match
		Performance	
		Team Performance	Match/Premiership/Series
		Game Events	Match
		Ladder betting	Premiership/series
		Team(s) to win or reach finals/specified level	Premiership/series
		Wooden spoon	Premiership/series
		Best of the select (Group betting)	Premiership/series
		Favourite out betting	Premiership/series
		Field betting	Premiership/series
		Last team standing/winning	Premiership/series
		Win	Premiership/series
		Quinella	Premiership/series
		Exacta	Premiership/series
		Match with highest total score in round or series	
		Match with highest winning margin in round or series	
		Winner / Placegetter	Award, etc
4	BACKGAMMON	World Championships	Winner/placegetter in stage/event/series/tournament or competition
		World Series of Backgammon	Favourite Out Betting
		American Backgammon Tour	Head to Head
		European Backgammon Tour	Individual Performance
		Tournaments sanctioned by the World Backgammon Association (WBA) or affiliated international or national organisations	Match/Premiership/Series
			Match
		Team Performance	Match/Premiership/Series
5	BADMINTON	Uber Cup	Winner/placegetter in stage/event/series/tournament or competition
		Sudirman Cup	Favourite Out Betting
		BWF World Championship	Head to Head
		BWF Super Series	Line

<i>Sport or Other Event</i>	<i>Sporting or Other Events or Classes of Sporting or Other Events</i>	<i>Approved Forms of Betting</i>	
	BWF Grand Prix Gold and Grand Prix events	Margin	
	Sanctioned Tournaments by the Badminton World Federation (BWF) and regional conferences - Badminton Asia Confederation, Badminton Confederation of Africa, Badminton Pan Am, Badminton Europe and Badminton Oceania	Total Score	
		Best of a Select (Group Betting)	
		Individual Performance	
		Match Period Performance	Match
		Team Performance	Match/Premiership/Series
6	BASEBALL	Head to Head	Match
	US National Baseball League Competition	Handicap	Match/Premiership/Series
	US College Baseball League Competition	Margins	Match
	Australian Baseball League Competition	Line	Match
	Special Events sanctioned by Australian Baseball League	Team to lead at end of specified time period(s)	Match
	Most Valuable Player awards sanctioned by relevant recognized governing body	Match score total	Match
	Olympic Games	Match score competitor	Match
	Matches and Series sanctioned by the International Baseball Federation (IBAF) or affiliated international or national organisations	Match score exact	Match
	World Baseball Classic *sanctioned by IBAF	Scoring methods (Ranges)	Match
	Baseball World Cup *sanctioned by IBAF	First, next or last specific scoring play/scorer	Match
	US National Baseball League (Minor Leagues)	Individual Performance	Match/Premiership/Series
	National Domestic competitions (men/women) eg Nippon Professional Baseball (Japan League)	Match Period Performance	Match
		Team Performance	Match/Premiership/Series
		Game Events	Match
		Ladder betting	Premiership/series
		Team(s) to win or reach finals/specified level	Premiership/series
		Wooden spoon	Premiership/series
		Best of the select (Group betting)	Premiership/series
		Favourite out betting	Premiership/series
		Field betting	Premiership/series
		Last team standing/ winning	Premiership/series

<i>Sport or Other Event</i>	<i>Sporting or Other Events or Classes of Sporting or Other Events</i>	<i>Approved Forms of Betting</i>		
		Win	Premiership/series	
		Quinella	Premiership/series	
		Exacta	Premiership/series	
		Series correct score	Premiership/series	
		Match with highest total score in round or series		
		Match with highest winning margin in round or series		
		Winner	Award, etc	
7	BASKETBALL	European Championship Competition	Head to Head	Match
	National Basketball Association (NBA, USA) Competition	Handicap	Match/Premiership/ Series	
	Women's Basketball Association (WBA, USA) Competition	Margins	Match	
	National/International Events sanctioned by Basketball Australia	Line	Match	
	National Collegiate Athletics Association (NCAA) Competition	Team to lead at end of specified time period(s)	Match	
	Australian National Basketball League (NBL) Competition	Match score total	Match	
	Australian Womens National Basketball League (WNBL) Competition	Match score competitor	Match	
	Playoff series Australian Continental Basketball League (CBA)	Match score exact	Match	
	World Championships sanctioned by Federated International Basketball Association	Scoring methods (Ranges)	Match	
	Most Valuable Player awards sanctioned by relevant recognized governing body	First, next or last specific scoring play/ scorer	Match	
	Goodwill Games	Individual Performance	Match/Premiership/ Series	
	Olympic Games	Match Period Performance	Match	
	Commonwealth Games	Team Performance	Match/Premiership/ Series	
	Matches and Series sanctioned by the Federated International Basketball Association (FIBA) or affiliated international or national organisations including Basketball Australia	Game Events	Match	
		Ladder betting	Premiership/series	
		Team(s) to win or reach finals/specified level	Premiership/series	
		Wooden spoon	Premiership/series	
		Best of the select (Group betting)	Premiership/series	
		Favourite out betting	Premiership/series	
		Field betting	Premiership/series	
		Last team standing/ winning	Premiership/series	
		Win	Premiership/series	
		Quinella	Premiership/series	
		Exacta	Premiership/series	

<i>Sport or Other Event</i>	<i>Sporting or Other Events or Classes of Sporting or Other Events</i>	<i>Approved Forms of Betting</i>	
		Match with highest total score in round or series Match with highest winning margin in round or series Winner	Award, etc
8 BOXING	<p>Sanctioned World Title Fights by World Boxing Association Sanctioned World Title Fights by World Boxing Council</p> <p>Sanctioned World Title Fights by International Boxing Federation Sanctioned World Title Fights by World Boxing Organisation Sanctioned World Title Fights by International Boxing Association Sanctioned World Title Fights by International Boxing Organisation Sanctioned World Title Fights by World Boxing Federation Sanctioned World Title Elimination Fights by WBA, WBC, IBF, IBA, WBO, IBO and WBF Sanctioned Australian Championship Fights by Australian Boxing Feder'n Goodwill Games Commonwealth Games Olympic Games Fights Sanctioned by Australian Boxing Federation Fights Sanctioned by Ring Magazine Fights involving a current or previous title holder of WBA, WBC, IBF, IBA, WBO, IBO, WBF or Australian Boxing Federation Fights broadcast on Australian television</p>	<p>Fight winner/draw</p> <p>Result/Method - KO/TKO, points decision, disqualification Result/Duration (number of rounds) Tournament Head to Head Tournament Winner</p> <p>Handicap betting</p>	
9 CHESS	<p>Sanctioned Tournaments by the Fédération Internationale des Échecs (FIDE)</p> <p>Sanctioned Tournaments by National Chess Organisations</p>	<p>Winner/placegetter in stage/event/series/tournament or competition Favourite Out Betting</p> <p>Head to Head Best of a Select (Group Betting) Individual Performance Match Period Performance Team Performance Game Events</p>	<p>Match/Premiership/Series Match Match/Premiership/Series Match</p>

<i>Sport or Other Event</i>	<i>Sporting or Other Events or Classes of Sporting or Other Events</i>	<i>Approved Forms of Betting</i>	
10 CRICKET	World Cup of Cricket (One Day Series)	Head to Head	Match/Premiership/Series
	Test Matches	Result	Match
	Interstate 1st Class Competition	Margins	Match
	Interstate One Day Series	Method of dismissal	Match
	International One Day Series	Next player out	Match
		Next wicket taker	Match
	Matches and Series sanctioned by Australian Cricket Board or affiliated international organisations	Team to lead at end of specified time period(s)	Match
	Commonwealth Games	Match score total	Match
	English County Games	Match score competitor	Match
	Most Valuable Player awards sanctioned by relevant recognized governing body	Match score exact	Match
		Competitors score (ranges) at end of specified time period	Match
		Individual Performance	Match/Premiership/Series
		First/Next/Last specific play/scorer	Match
		Match Period Performance	Match
		Team Performance	Match/Premiership/Series
		Ladder betting	Premiership/series
		Team(s) to win or reach finals/specified level	Premiership/series
		Wooden spoon	Premiership/series
		Best of the select (Group betting)	Premiership/series
		Favourite out betting	Premiership/series
		Field betting	Premiership/series
		Last team standing/ winning	Premiership/series
		Win	Premiership/series
		Quinella	Premiership/series
		Exacta	Premiership/series
		Match with highest total score in round or series	
		Match with highest winning margin in round or series	
		Winner	Award, etc
11 CYCLING	World Championships	Winner/placegetter in event/stage/category (general, sprint, king of mountain)	
	Tour de France	Quinella	
	Australian Championships	Exacta	
	Melbourne to Warnambool	Trifecta	
	Other events sanctioned by International Cycling Fed'n or Cycling Australia	Favourite Out betting	
	Goodwill Games	Field Betting	
	Commonwealth Games	Head to head	

<i>Sport or Other Event</i>	<i>Sporting or Other Events or Classes of Sporting or Other Events</i>	<i>Approved Forms of Betting</i>
	Olympic Games	Best of the select (Group betting)
	2009 Tour Down Under	Individual Performance Reach final/specified level
12 DARTS	Sanctioned Competitions by the Professional Darts Corporation	Winner/placegetter in stage/event/series/tournament or competition Favourite Out Betting
	Sanctioned Competitions by the British Darts Organisation	Head to Head
	Sanctioned Competitions by the World Darts Federation	Best of a Select (Group Betting) Individual Performance Handicap Betting Match Score Total Match Period Performance
13 ENTERTAINMENT	Academy Awards (Oscars)	Winner
	Screen Actors Guild Awards (SAG)	Favourite Out Betting
	British Academy of Film and Television Arts (BAFTA)	Individual Performance
	Logie Awards	
	The Australian Film Institute Awards (AFI)	
	Cannes International Film Festival	
	Sundance Film Festival	
	Venice International Film Festival	
	Tropfest Short Film Awards	
	Razzie Awards	
	Miss Universe Beauty Pageant	Contestant to win or reach finals/specified level
	Miss World Beauty Pageant	
	Miss Australia Beauty Pageant	
	Miss America Beauty Pageant	
	* Awards for film, television and entertainment industries in Australia and other countries	
14 EQUESTRIAN	Olympic Games	Winner/placegetter in event or stage
	World Championships	Quinella
	Tournaments or Events sanctioned by official international or national governing bodies and affiliates.	Exacta Trifecta Favourite Out Betting Field Betting Head to Head Best of the select (Group betting)

<i>Sport or Other Event</i>	<i>Sporting or Other Events or Classes of Sporting or Other Events</i>	<i>Approved Forms of Betting</i>	
		Individual Performance Reach final/specified level	
15 FLOORBALL	Matches and Series sanctioned by the International Floorball Federation or affiliated international or national organisations	Winner/placegetter in stage/event/series/tournament or competition Favourite Out Betting Head to Head Line Margin Total Score Best of a Select (Group Betting) Individual Performance Match Period Performance Team Performance	Match/Premiership/Series Match Match/Premiership/Series
16 FUTSAL	FIFA Futsal World Cup FIFUSA World Futsal Championships AMF World Futsal Championships Futsal Mundialito Grand Prix de Futsal Events and Series sanctioned by FIFA/UEFA or affiliated international or national organisations	Head to Head Handicap (Points Start) Margins Line Result Team to lead at end of specified time period(s) Match score total Match score competitor Match score exact First/next or last specific play/scorer Individual Performance Match Period Performance Team Performance Game Events (excluding throw-ins, kick off or goal kick options) Ladder betting Team to win or reach finals/specified level Wooden spoon Best of the select (Group betting) Favourite out betting Field betting Last team standing/ winning Promotion/relegation	Match Match/Premiership/Series Match Match Match Match Match Match Match Match Match/Premiership/Series Match/Match Period/Series Match/ Match Period/Series Match/Match Period/Series Premiership/series Premiership/series Premiership/series Premiership/series Premiership/series Premiership/series Premiership/series

<i>Sport or Other Event</i>	<i>Sporting or Other Events or Classes of Sporting or Other Events</i>	<i>Approved Forms of Betting</i>	
		Winner/Placegetter Exacta Quinella Trifecta Match with highest points in round or series Match with highest winning margin in round or series Winner	Premiership/series Premiership/series Premiership/series Premiership/series Award, etc
17 GAELIC FOOTBALL	Matches and Series sanctioned by the Gaelic Athletic Association or affiliated international or national organisations	Winner/placegetter in stage/event/ series/tournament or competition Favourite Out Betting Head to Head Line Margin Total Score First, next or last specific scoring play/ scorer Best of a Select (Group Betting) Individual Performance Match Period Performance Team Performance Game Event	Match/Premiership/ Series Match Match/Premiership/ Series Match
18 GOLF	Australian or State Opens Australian Professional Golf Association/Ladies Professional Golf Association Championships PGA Tour of Australasia Ltd Events US Masters US PGA/LPGA Dunhill Cup US Open US PGA/LPGA Tour Events British Open World Match Play Ryder Cup President's Cup Other events (incl. "Skins") sanctioned by governing PGA/LPGA or an affiliated international organisation Olympic Games	Best of the select (Group betting) Head to head Individual Performance Make cut/final series Winner/placegetter in event Quinella Exacta Trifecta Stage betting Favourite out betting Field betting Total matchscore/ winning score Greens in regulation Fairways hit Putts per round No of Birdies/Eagles/ Bogeys	

<i>Sport or Other Event</i>	<i>Sporting or Other Events or Classes of Sporting or Other Events</i>	<i>Approved Forms of Betting</i>
		Playoff Yes/No Wire to Wire winner
19 GRIDIRON (AMERICAN FOOTBALL)	United States National Football League Competition Superbowl United States College Football Competition Events sanctioned by National Football League & National Collegiate Athletic Association Most Valuable Player awards sanctioned by relevant recognized governing body	Head to Head Handicap Margins Line Team to lead at end of specified time period(s) Match score total Match score competitor Match score exact First, next or last specific play/scorer Scoring methods (Ranges) Individual Performance Match Period Performance Team Performance Game Events (excluding kick off) Ladder betting Team(s) to win or reach finals/specified level Wooden spoon Best of the select (Group betting) Favourite out betting Field betting Last team standing/ winning Win Quinella Exacta Match with highest total score in round or series Match with highest winning margin in round or series Winner
		Match Match/Premiership/ Series Match Match Match Match Match Match/Premiership/ Series Match Match/Premiership/ Series Match Premiership/series Premiership/series Premiership/series Premiership/series Premiership/series Premiership/series Premiership/series Premiership/series Premiership/series Award, etc
20 HANDBALL	Matches and Series sanctioned by the International Handball Federation (IHF) or affiliated international or national organisations	Winner/placegetter in stage/event/ series/tournament or competition Favourite Out Betting Head to Head

<i>Sport or Other Event</i>	<i>Sporting or Other Events or Classes of Sporting or Other Events</i>	<i>Approved Forms of Betting</i>	
		Best of a Select (Group Betting)	
		Individual Performance	Match/Premiership/Series
		Match Period Performance	Match
		Team Performance	Match/Premiership/Series
21 HOCKEY	World Cup International Tournaments and Tests	Head to Head Handicap	Match Match/Premiership/Series
	Australian Championships Commonwealth Games Other matches sanctioned by International Hockey Fed'n or Hockey Australia	Margins Line Result	Match Match Match
	Most Valuable Player awards sanctioned by relevant recognized governing body	Team to lead at end of specified time period(s)	Match
	Olympic Games	Match score total Individual Performance	Match Match/Premiership/Series
		Match Period Performance	Match
		Team Performance	Match/Premiership/Series
		Game Events	Match
		Ladder betting	Premiership/series
		Team to win or reach finals/specified level	Premiership/series
		Wooden spoon	Premiership/series
		Best of the select (Group betting)	Premiership/series
		Favourite out betting	Premiership/series
		Field betting	Premiership/series
		Last team standing/ winning	Premiership/series
		Promotion/relegation	Premiership/series
		Winner/Placegetter	Premiership/series
		Exacta	Premiership/series
		Quinella	Premiership/series
		Trifecta	Premiership/series
		Match with highest points in round or series	
		Match with highest winning margin in round or series	
		Winner	Award, etc
22 HURLING	Matches and Series sanctioned by the Gaelic Athletic Association or affiliated international or national organisations	Winner/placegetter in stage/event/ series/tournament or competition Favourite Out Betting Head to Head	

<i>Sport or Other Event</i>	<i>Sporting or Other Events or Classes of Sporting or Other Events</i>	<i>Approved Forms of Betting</i>		
		Line Margin Total Score First, next or last specific scoring play/ scorer Best of a Select (Group Betting) Individual Performance Match Period Performance Team Performance Game Event	Match/Premiership/ Series Match Match/Premiership/ Series Match	
23	ICE HOCKEY	US National Hockey League Competition Australian National Hockey League Competition Canadian National Hockey League Competition International matches sanctioned by IHL World Championships Most Valuable Player awards sanctioned by relevant recognized governing body Olympic Games	Head to Head Handicap Margins Line Result Team to lead at end of specified time period(s) Match score total Match score competitor Match score exact Individual Performance Match Period Performance Team Performance Game Events Ladder betting Team to win or reach finals/specified level Wooden spoon Best of the select (Group betting) Favourite out betting Field betting Last team standing/ winning Promotion/relegation Winner/Placegetter Exacta Quinella Trifecta Match with highest points in round or series	Match Match/Premiership/ Series Match Match Match Match Match/Premiership/ Series Match Match/Premiership/ Series Match Premiership/series Premiership/series Premiership/series Premiership/series Premiership/series Premiership/series Premiership/series Premiership/series Premiership/series Premiership/series Premiership/series Premiership/series

<i>Sport or Other Event</i>	<i>Sporting or Other Events or Classes of Sporting or Other Events</i>	<i>Approved Forms of Betting</i>
		Match with highest winning margin in round or series Winner Award, etc
24 INTEREST RATES	Official Interest Rates of the Reserve Bank of Australia (RBA)	Will there be an increase/decrease Size of increase/decrease (ranges)
25 LACROSSE	Matches and Series sanctioned by the Federation of International Lacrosse (FIL) or affiliated international or national organisations	Winner/placegetter in stage/event/series/tournament or competition Favourite Out Betting Head to Head Best of a Select (Group Betting) Individual Performance Match/Premiership/Series Match Period Performance Match Team Performance Match/Premiership/Series
26 LAWN BOWLS	NSW Premier League Test Series City of Sydney Masters State Number 1 Pennants (Grade 1) Australian Sides Championship NSW State Championship Final Series Trans Tasman Series Asia Pacific Games Champion of Champions Competition Australian Indoor Championships World Championships Commonwealth Games	Head to head Pick the winners Winning margins Competition winner Progress to an identified final Pick a winning score Total points
27 LITERARY AND ARTS AWARDS	Archibald Prize / Packing Room Prize Miles Franklin Award Booker Prize	Winner Favourite Out Betting Individual Performance
28 MAGIC MILLIONS HORSE SALES	Magic Millions Sales	Highest Selling Horse Highest Bid (ranges) Highest Average Sire Average Price Number Passed in Individual Performance

<i>Sport or Other Event</i>	<i>Sporting or Other Events or Classes of Sporting or Other Events</i>	<i>Approved Forms of Betting</i>	
29 MISCELLANEOUS	Commonwealth Games	Select medal tally won by a specific competitor or country overall or in a specific sport	
	Olympic Games	Ladder Betting	
	Jockey Challenge	Winner	
		Exact Score	
		Group Betting	
	Trainers Challenge	Winner	
		Exact Score	
		Group Betting	
30 MOTOR RACING	World Formula One Grand Prix Championship Races and Series	Winner/placegetter in event or stage	
	World Grand Prix Championship Races and Series (Cars and Bikes)	Quinella	
	World/Australian Touring Car Championship Rounds and Series	Exacta	
	Indy Car Grand Prix races	Trifecta	
	Bathurst 1,000 (Production and 2 litre classes)	Favourite Out betting	
	State and National Sprintcar Championships	Field Betting	
	Le Mans	Head to head	
	NASCAR Championship Races & Series	Best of the select (Group betting)	
	Indianapolis Races	Individual Performance	
	British League Championship (Speedway/Bikes)	Reach final/specified level	
	Speedway Riders World Championship (Bikes)	Number of competitors to complete/be eliminated from event or stage	
	Australian Rally Championships	Pole Position	
	World Rally Championships	Fastest Lap	
	World Grand Prix Support Championship Races & Series (Cars & Bikes)		
	World A1 Grand Prix Championship Races and Series	Race Period Performance	Race
	Events sanctioned by official international or national governing bodies and affiliates.	Team Performance	Race/Premiership/Series
		Race Events	Race
		Competitor to lead at end of specified period	
31 NETBALL	Commonwealth Games	Head to Head	Match
	Interstate Premier Competition	Handicap	Match/Premiership/Series
	World Netball Championships	Margins	Match
	International Matches sanctioned by International Federation of Netball Associations and affiliates	Line	Match
		Team to lead at end of specified time period(s)	Match
		Match score total	Match
		Match score competitor	Match

<i>Sport or Other Event</i>	<i>Sporting or Other Events or Classes of Sporting or Other Events</i>	<i>Approved Forms of Betting</i>
		Match score exact Match First, next or last Match specific play/scorer Scoring methods Match (Ranges) Individual Performance Match/Premiership/ Series Match Period Match Performance Team Performance Match/Premiership/ Series Ladder betting Premiership/series Team(s) to win or reach Premiership/series finals/specified level Wooden spoon Premiership/series Best of the select Premiership/series (Group betting) Favourite out betting Premiership/series Field betting Premiership/series Last team standing/ Premiership/series winning Win Premiership/series Quinella Premiership/series Exacta Premiership/series Match with highest total score in round or series Match with highest winning margin in round or series Winner Award, etc
32 NOBEL PEACE PRIZE	Categories – chemistry, physics, literature, peace, and physiology or medicine	Winner Favourite Out Betting Individual Performance
33 OLYMPIC & COMMONWEALTH GAMES	Events conducted at the Olympic Games sanctioned by the International Olympic Committee (IOC) Events conducted at the Commonwealth Games sanctioned by the Commonwealth Games Organising Committee	Winner/placegetter in stage/event/ series/tournament or competition Favourite Out Betting Head to Head Handicap Margins Line Team to lead at end of specified time period(s) Match Score Total / Ranges Match score competitor First, next or last specific scoring play/scorer

<i>Sport or Other Event</i>	<i>Sporting or Other Events or Classes of Sporting or Other Events</i>	<i>Approved Forms of Betting</i>	
		Individual Performance Team/Country Performance Best of a Select (Group Betting) Bet types approved under the individual sports in this schedule	
34 POKER	Events and Series sanctioned by the World Poker Tournaments (WPT) or affiliated international or national organisations Events and Series sanctioned by the World Series of Poker (WSOP) or affiliated international or national organisations	Winner/placegetter in stage/event/series/tournament or competition To make final table Favourite Out Betting Head to Head Best of a Select (Group Betting) Individual Performance Event Period Performance Team Performance	Match/Premiership/Series Match Match/Premiership/Series
35 POWER BOATS	Events and Series sanctioned by the UIM - Union Internationale Motonautique (International Power Boating Association) or Australian Power Boat Association or affiliated international or national organisations	Winner/placegetter in stage/event/series/tournament or competition Favourite Out Betting Head to Head Best of a Select (Group Betting) Individual Performance Team Performance	Race Race/Premiership/Series
36 REALITY TV SHOWS	Australian and International Television Shows	Winner Eliminated Contestant Individual Performance	
37 ROWING	Olympic Games World Championships Events sanctioned by the International Rowing Federation (FISA) or affiliated international or national organisations	Winner/placegetter in event or stage Quinella Exacta Trifecta Favourite Out Betting Field Betting Head to Head	

<i>Sport or Other Event</i>	<i>Sporting or Other Events or Classes of Sporting or Other Events</i>	<i>Approved Forms of Betting</i>	
		Best of the select (Group betting)	
		Individual Performance	
		Reach final/specified level	
38 RUGBY LEAGUE	Test Matches/Series	Head to Head	Match
	National Rugby League Premiership Competition	Handicap	Match/Premiership/Series
	State of Origin Competition	Margins	Match
	World Sevens or Nines Tournaments	Line	Match
	Special Matches sanctioned by NRL	Team to lead at end of specified time period(s)	Match
	Super League Competition (United Kingdom)	Match score total	Match
	NSW RL Premier League Matches	Match score competitor	Match
	Most Valuable Player awards sanctioned by relevant recognized governing body	Match score exact	Match
	NRL Toyota Cup Finals Matches	First, next or last specific play/scorer	Match
	NRL Toyota Cup Competition	Scoring methods (Ranges)	Match
	Matches and Series sanctioned by the Rugby League International Federation (RLIF) or affiliated international or national organisations	Individual Performance	Match/Premiership/Series
	Matches and Series sanctioned by the Australian Rugby League / National Rugby League and affiliated state bodies	Match Period Performance	Match
	Matches and Series sanctioned by the New Zealand Rugby League (NZRL)	Team Performance	Match/Premiership/Series
	NSW Cup	Game Events (excluding kick off)	Match
	Bundaberg Red Cup	Ladder betting	Premiership/series
	CRL games	Team(s) to win or reach finals/specified level	Premiership/series
	S G Ball Cup	Wooden spoon	Premiership/series
	Harold Matthews Cup	Best of the select (Group betting)	Premiership/series
		Favourite out betting	Premiership/series
		Field betting	Premiership/series
		Last team standing/ winning	Premiership/series
		Win	Premiership/series
		Quinella	Premiership/series
		Exacta	Premiership/series
		Match with highest total score in round or series	
		Match with highest winning margin in round or series	
		Winner	Award, etc

<i>Sport or Other Event</i>	<i>Sporting or Other Events or Classes of Sporting or Other Events</i>	<i>Approved Forms of Betting</i>	
39 RUGBY UNION	Five/Six Nations Tournament Matches	Head to Head	Match/Premiership/Series/Round
	NSW and Queensland Premiership Competition	Handicap	Match/Premiership/Series
	Test Matches	Margins	Match
	World Sevens Competitions	Line	Match
	World Cup Matches	Team to lead at end of specified time period(s)	Match
	Tri-Nations Series	Match score total	Match
	Super 15 Competition	Match score competitor	Match
	Interstate Matches	Match score exact	Match
	Other Matches Sanctioned by International Rugby Board or affiliated governing body	First, next or last specific play/scorer	Match
	Commonwealth Games	Scoring methods (Ranges)	Match
	Most Valuable Player awards sanctioned by relevant recognized governing body	Individual Performance	Match/Premiership/Series
	U19/Junior World Championships/ World Cup	Match Period	Match
		Performance	
		Team Performance	Match/Premiership/Series
		Game Events (excluding kick off)	Match
		Ladder betting	Premiership/series
		Team(s) to win or reach finals/specified level	Premiership/series
		Wooden spoon	Premiership/series
		Best of the select (Group betting)	Premiership/series
		Favourite out betting	Premiership/series
		Field betting	Premiership/series
		Last team standing/ winning	Premiership/series
		Win	Premiership/series
		Quinella	Premiership/series
		Exacta	Premiership/series
		Match with highest total score in round or series	
		Match with highest winning margin in round or series	
		Winner	Award, etc
40 SQUASH	Events and Series sanctioned by the World Squash Federation or Professional Squash Association (PSA) or the Women's International Squash Players Association (WISPA) or affiliated international or national organisations	Winner/placegetter in stage/event/series/tournament or competition	
		Favourite Out Betting	
		Head to Head	
		Line	
		Margin	

<i>Sport or Other Event</i>	<i>Sporting or Other Events or Classes of Sporting or Other Events</i>	<i>Approved Forms of Betting</i>	
		Total Score Best of a Select (Group Betting) Individual Performance Match Period Performance Team Performance	Match/Premiership/Series Match Match/Premiership/Series
41 SNOOKER	Sanctioned Tournaments by the World Professional Billiards and Snooker Association Sanctioned Tournaments by the Australian Billiards and Snooker Council	Winner/Placegetter in stage/event/series/tournament or competition Favourite Out Betting Head to Head Best of Select (Group Betting) Individual Performance Match Period Performance	
42 SOCCER	English Premier League and 1st, 2nd & 3rd Division Competition English Conference League FA Cup UEFA Europa League (formerly UEFA Cup) World Cup A-League (formerly Australian National Soccer League) European Champions League Competition UEFA European Football Championship (formerly Euro Championship) Special Matches sanctioned by Soccer Australia, FIFA, UEFA NSW State League Competition Other National/International Competitions/Cups sanctioned by FIFA/UEFA Most Valuable Player awards sanctioned by relevant recognized governing body Olympic Games Scottish Division 2 Scottish Division 3 Italian Serie B and C Spanish Division 2	Head to Head Handicap (Points Start) Margins Line Result Team to lead at end of specified time period(s) Match score total Match score competitor Match score exact First/next or last specific play/scorer Individual Performance Match Period Performance Team Performance Game Events (excluding throw-ins, kick off or goal kick options) Ladder betting Team to win or reach finals/specified level Wooden spoon	Match Match/Premiership/Series Match Match Match Match Match Match Match Match Match/Premiership/Series Match/Match Period/Series Match/ Match Period/Series Match/Match Period/Series Premiership/series Premiership/series Premiership/series

<i>Sport or Other Event</i>	<i>Sporting or Other Events or Classes of Sporting or Other Events</i>	<i>Approved Forms of Betting</i>	
	German Division 2	Best of the select (Group betting)	Premiership/series
	J-League Division 2	Favourite out betting	Premiership/series
	US Major Soccer League Division 2	Field betting	Premiership/series
	Brazilian State Leagues	Last team standing/ winning	Premiership/series
	Russian Division 2	Promotion/relegation	Premiership/series
	Turkish Division 2	Winner/Placegetter	Premiership/series
	Portugal Division 2	Exacta	Premiership/series
	Beach Soccer Events sanctioned by FIFA or Beach Soccer Worldwide (BBSW)	Quinella	Premiership/series
		Trifecta	Premiership/series
		Match with highest points in round or series	
		Match with highest winning margin in round or series	
		Winner	Award, etc
43	STOCK MARKET INDICES	International Indices	Increase / Decrease
		ASX Indices	Margin (Ranges)
44	SURF LIFE SAVING	Australian Iron Man/Woman Competitions	Winner/placegetter in event or stage
		World Iron Man/Woman Competitions	Quinella
		Australian Surf Life Saving Championship Events	Exacta
		Goodwill Games	Trifecta
		Events sanctioned by official international or national governing bodies and affiliates.	Favourite Out betting
		Field Betting	
		Head to head	
		Best of the select (Group betting)	
		Individual Performance	
		Reach final/specified level	
45	SURFING	World Professional Men's and Women's Tour Events	Winner/placegetter in stage/event/series/ tournament
		Events sanctioned by the Association of Surfing Professionals or affiliated international or national organisations	Quinella
			Exacta
			Trifecta
			Favourite Out betting
			Field Betting
			Head to head
			Best of the select (Group betting)
			Individual Performance
			Reach final/specified level

<i>Sport or Other Event</i>	<i>Sporting or Other Events or Classes of Sporting or Other Events</i>	<i>Approved Forms of Betting</i>	
46 SWIMMING	<p>Olympic Games</p> <p>World Championships</p> <p>Commonwealth Games</p> <p>Events sanctioned by the FINA or affiliated international or national organisations</p> <p>Events sanctioned by Swimming Australia</p>	<p>Winner/placegetter in event or stage</p> <p>Quinella</p> <p>Exacta</p> <p>Trifecta</p> <p>Favourite Out Betting</p> <p>Field Betting</p> <p>Head to Head</p> <p>Best of the select (Group betting)</p> <p>Individual Performance</p> <p>Reach final/specified level</p>	
47 TABLE TENNIS	<p>Events and Series sanctioned by the International Table Tennis Federation (ITTF) or affiliated international or national organisations</p>	<p>Winner/placegetter in stage/event/series/tournament or competition</p> <p>Favourite Out Betting</p> <p>Head to Head</p> <p>Line</p> <p>Margin</p> <p>Total Score</p> <p>Best of a Select (Group Betting)</p> <p>Individual Performance</p> <p>Match Period Performance</p> <p>Match/Premiership/Series</p> <p>Match</p>	
48 TEN PIN BOWLING	<p>Events and Series sanctioned by the Professional Bowlers Association (PBA) or affiliated international or national organisations</p> <p>Events and Series sanctioned by the European Tenpin Bowling Federation</p> <p>Events and Series sanctioned by the United States Bowling Congress (USBC)</p> <p>Weber Cup</p> <p>World Tenpin Masters</p> <p>Qubica/AMF World Cup.</p>	<p>Winner/placegetter in stage/event/series/tournament or competition</p> <p>Favourite Out Betting</p> <p>Head to Head</p> <p>Line</p> <p>Margin</p> <p>Total Score</p> <p>Best of a Select (Group Betting)</p> <p>Individual Performance</p> <p>Match Period Performance</p> <p>Team Performance</p> <p>First, next or last specific scoring play/scorer</p> <p>Match/Premiership/Series</p> <p>Match</p> <p>Match/Premiership/Series</p>	

<i>Sport or Other Event</i>	<i>Sporting or Other Events or Classes of Sporting or Other Events</i>	<i>Approved Forms of Betting</i>
49 TENNIS	Grand Slam Tournaments Australian State Open Championship Australian Indoor Championship Davis Cup Hopman Cup Federation Cup Association of Tennis Professional Tour Other Events sanctioned by Association of Tennis Professionals, Womens Tennis Association, International Tennis Federation or affiliated bodies Olympic Games Exhibition matches involving ATP/ WTA players World Team Tennis	Head to head Correct set score in match Number of games played in a set/match Number of aces in a game/set/match Next set winner Next game winner Match Period Performance Team Performance Game Events (excluding 1st to serve) Line Player/team to win or reach finals/specified level Best of the select (Group betting) Favourite out betting Field betting Individual Performance Exacta Quinella Match/Tournament Match Match Match Match Match Match Match/Premiership/Series Match Match Tournament Tournament Tournament Tournament Match/Tournament Tournament Tournament
50 TRIATHLON	Events sanctioned by Triathlon Australia or International Triathlon Union or a recognised affiliated body Goodwill Games Commonwealth Games Olympic Games	Winner/placegetter in stage/event/series/tournament Quinella Exacta Trifecta Favourite Out betting Field Betting Head to head Best of the select (Group betting) Individual Performance Reach final/specified level
51 VOLLEYBALL	Olympic Games World Championships Events sanctioned by International Federation of Volleyball (FIVA) or affiliated international or national organisations Beach Volleyball Events sanctioned by FIVA or affiliated international or national organisations	Head to head Handicap Margins Line

<i>Sport or Other Event</i>	<i>Sporting or Other Events or Classes of Sporting or Other Events</i>	<i>Approved Forms of Betting</i>
		Team to lead at end of specified time period/s Match score total Match score competitor Match score exact Scoring methods (Ranges) First, next or last specific scoring play/ scorer Individual Performance Ladder betting Team(s) to win or reach finals/specified level Wooden spoon Best of the select (Group betting) Favourite out betting Field betting Last team standing/ winning Win Quinella Exacta Match with highest total score in round or series Match with highest winning margin in round or series
52	WEIGHTLIFTING	Olympic Games World Championships Commonwealth Games Events sanctioned by International Weightlifting Federation (IWF) or affiliated international or national organisations
		Winner/placegetter in event or stage Quinella Exacta Trifecta Favourite Out Betting Field Betting Head to Head Best of the select (Group betting) Individual Performance Reach final/specified level
53	WINTER SPORTS	Ice Skating, Skiing, Sledding, Snowboarding and Snowmobiling Events and Series sanctioned by the International Ski Federation Events sanctioned by official international or national governing bodies and affiliates.
		Winner/placegetter in stage/event/ series/tournament or competition Favourite Out Betting Head to Head Best of a Select (Group Betting)

<i>Sport or Other Event</i>	<i>Sporting or Other Events or Classes of Sporting or Other Events</i>	<i>Approved Forms of Betting</i>	
		Individual Performance	Match/Premiership/ Series
		Event Period Performance	Match
		Team Performance	Match/Premiership/ Series
54 YACHT RACING	Sydney to Hobart	Winner/placegetter in stage/event/series/ tournament	
	America's Cup	Quinella	
	Admiral's Cup	Exacta	
	Senior 18 Foot Sailing sanctioned by Yachting Association of NSW	Trifecta	
	Olympic Games	Favourite Out betting	
	Events sanctioned by the International Sailing Federation (ISAF) or affiliated international or national organisations	Field Betting	
		Head to head	
		Best of the select (Group betting)	
		Individual Performance	
		Reach final/specified level	

PRIVATE ADVERTISEMENTS

COUNCIL NOTICES

ALBURY CITY COUNCIL

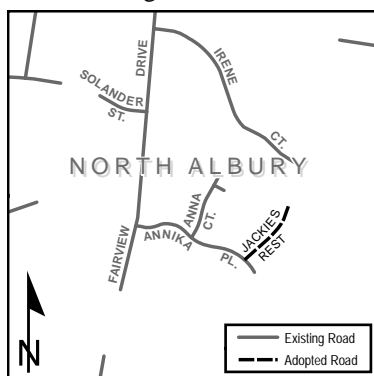
Roads Act 1993 – Section 162

Naming of Roads

NOTICE is hereby given as required under section 162 of the Roads Act 1993 and in accordance with The Roads (General) Regulation 2008, Part 2, Division 2, section 9 (a) that Albury City Council, as the responsible road authority, has renamed the following road in the suburb of North Albury:

Jackies Rest – previously known as Jack Court (see diagram below).

Jack Court was gazetted on 6 July 2012. The change was necessary due to a naming conflict.



No objections to the proposed name were received within the required advertising period. L. G. TOMICH, General Manager, Albury City Council, 553 Kiewa Street, Albury NSW 2640. [6625]

ALBURY CITY COUNCIL

Roads Act 1993 – Section 162

Naming of Roads

NOTICE is hereby given as required under section 162 of the Roads Act 1993 and in accordance with The Roads (General) Regulation 2008, Part 2, Division 2, section 9 (a) that Albury City Council, as the responsible road authority, has named the following road in the suburb of Thurgoona:

Felstead Circuit.

The road forms part of another stage of development of "Fairway Gardens Estate". Also included in the development are Forest Drive and Pickworth Street which have previously been adopted and gazetted. See diagram below.



No objections to the proposed names were received within the required advertising period. L. G. TOMICH, General Manager, Albury City Council, 553 Kiewa Street, Albury NSW 2640. [6626]

ALBURY CITY COUNCIL

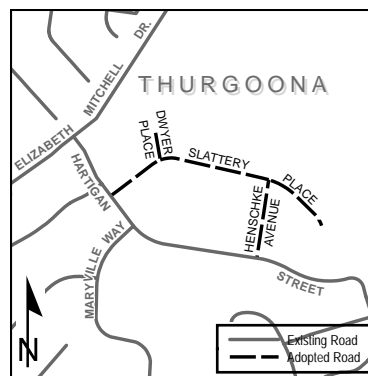
Roads Act 1993 – Section 162

Naming of Roads

NOTICE is hereby given as required under section 162 of the Roads Act 1993 and in accordance with The Roads (General) Regulation 2008, Part 2, Division 2, section 9 (a) that Albury City Council, as the responsible road authority, has named the following roads in the suburb of Thurgoona:

Dwyer Place, Henschke Avenue and Slattery Place.

The roads are part of a proposed residential development off Hartigan Street, Thurgoona. See diagram below.



No objections to the proposed names were received within the required advertising period. L. G. TOMICH, General Manager, Albury City Council, 553 Kiewa Street, Albury NSW 2640. [6627]

ALBURY CITY COUNCIL

Roads Act 1993 – Section 162

Naming of Roads

NOTICE is hereby given as required under section 162 of the Roads Act 1993 and in accordance with The Roads (General) Regulation 2008, Part 2, Division 2, section 9 (a) that Albury City Council, as the responsible road authority, has named the following road in the suburb of Thurgoona:

Shepherd Court.

The road is part of a proposed residential development off Kerr Road, Thurgoona. See diagram below.



No objections to the proposed names were received within the required advertising period. L. G. TOMICH, General Manager, Albury City Council, 553 Kiewa Street, Albury NSW 2640. [6628]

ARMIDALE DUMARESQ COUNCIL

Roads Act 1993

Naming of Roads

PURSUANT to section 162 of the Roads Act 1993, Council proposes to officially name the following roads:

<i>Location</i>	<i>Proposed Name(s)</i>
In the subdivision of land situated east of Rockvale Road, being Lot 14, DP 1109844.	Ben Venue Boulevard, Page Drive and Somerville Close.

S. BURNS, General Manager, Armidale Dumaresq Council, PO Box 75A, Armidale NSW 2350. [6629]

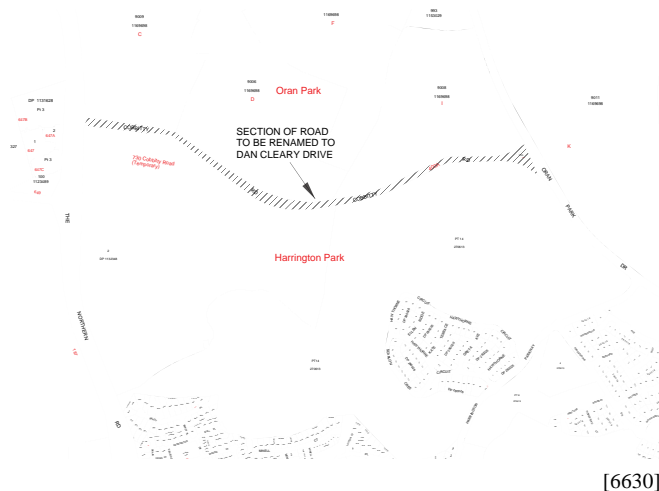
CAMDEN COUNCIL

Erratum

Road Act 1993

Renaming section of Council Road

THE renaming road originally gazetted in the *New South Wales Government Gazette* of 24 August 2012, Folio 3800, the map showed the name Dan Cleary Road it should be corrected to Dan Cleary Drive. GREG WRIGHT, General Manager, Camden Council, PO Box 183, Camden NSW 2570.



[6630]

LAKE ILLAWARRA AUTHORITY

Pesticides Regulation 2009

Pesticide Use Notification Plan

THE Lake Illawarra Authority wishes to advise that it has finalised a Pesticide Use Notification Plan in accordance with the Pesticides Regulation 2009.

The plan applies to foreshore areas around Lake Illawarra, including Cudgerie Island (R51678) and Windang Island (R1004829), located within the local government areas of Wollongong and Shellharbour.

The plan is on display at the Authority's Office, State Government Office Block, Level 3, 84 Crown Street,

Wollongong NSW 2500 and can be viewed on the Authority's internet website www.lia.nsw.gov.au.

The plan became effective as of 9 August 2012.

BRIAN DOOLEY, Executive Officer, Lake Illawarra Authority, PO Box 867, Wollongong NSW 2520. [6631]

LAKE MACQUARIE CITY COUNCIL

Naming of Roads

LAKE MACQUARIE CITY COUNCIL advises that in accordance with section 162.1 of the Roads Act 1993 and Part 2, Division 2, Clause 9, Roads Regulations 2008, it has named the following roads:

<i>Location</i>	<i>Proposed Name</i>
Subdivision of Lot 105, DP 1000408 and Lot 15, DP 849003 and Lot E, DP 938528 at West Wallsend. Origin of Names: Mining Heritage.	Tramway Drive, Cutter Court, Drift Street, Permit Street, Steam Close, Exploration Close and Royalty Street.

No objections to the proposed names were received within the advertising period. BRIAN BELL, General Manager, Lake Macquarie City Council, Box 1906, Hunter Region Mail Centre NSW 2310. [6632]

LIVERPOOL CITY COUNCIL

Roads Act 1993, Section 10

Notice of Dedication of Land as Public Road

NOTICE is hereby given that the Council of the City of Liverpool dedicates the land described in the Schedule below as public road under section 10 of the Roads Act 1993. FAROOQ PORTELLI, General Manager, The Council of the City of Liverpool, Locked Bag 7064, Liverpool BC NSW 1871.

SCHEDULE

All that piece or parcel of land known as Lot 308 in Deposited Plan 1118048 at Moorebank, in the City of Liverpool, Parish of Holsworthy, County of Cumberland and as described in Folio Identifier 308/1118048. [6633]

PENRITH CITY COUNCIL

Pursuant to Clause 9 of the Roads Regulation 2008, notice is hereby given of the naming of the following roads:

Proposed New Name/Location:

Charlotte Street, off Cullen Avenue, Jordan Springs.

Caribbean Promenade, off Cullen Avenue, Jordan Springs.

For further information please contact The General Manager, Mr Alan Stoneham, Penrith City Council on (02) 4732 7777. [6634]

SHOALHAVEN CITY COUNCIL

Naming of Roads

SHOALHAVEN CITY COUNCIL advises that in accordance with section 162.1 of the Roads Act 1993 and Part 2, Division 2, Clause 9, Road Regulations 2008, it has named the following road:

<i>Location</i>	<i>Road Name</i>
Subdivision of Lot 118-119, DP 751258, off Sutherland Drive, North Nowra.	George Lee Way.

No objections to the proposed name were received within the advertising period. R. PIGG, General Manager, Bridge Road, Nowra NSW 2541. File SF9690-05. [6635]

SHOALHAVEN CITY COUNCIL

Roads Act 1993, Section 10

Dedication of Land as Public Road

NOTICE is hereby given that in accordance with section 10 of the Roads Act 1993, the land held by Council as described in the Schedule below is hereby dedicated as public road. R. D. PIGG, General Manager, Shoalhaven City Council, Bridge Road, Nowra NSW 2541. File SF10172.

SCHEDULE

All that parcel of land known as Lot 1322 inclusive, in Deposited Plan 1172464, Parish of Conjola, County of St Vincent, being land situated adjacent to Egans Farm Lane, Yatte Yattah. [6636]

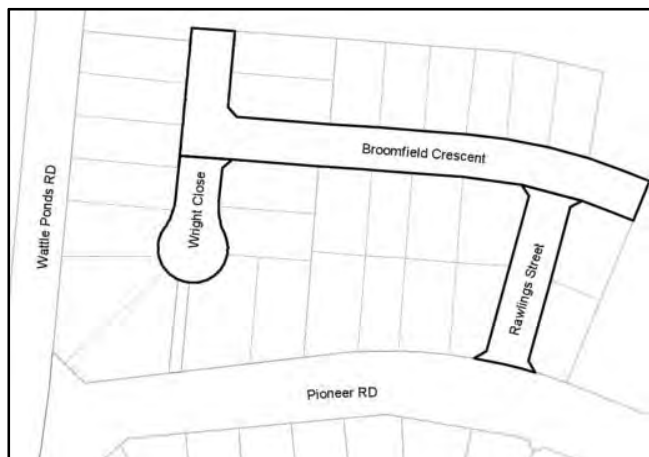
SINGLETON COUNCIL

Roads Act 1993, Section 162

Naming of Public Roads

NOTICE is hereby given that Singleton Council, in pursuance of section 162 of the Roads Act 1993 and the Roads (General) Regulation, has resolved to name the following roads (as shown in the diagram below):

<i>Location</i>	<i>New Road Name</i>
Being three roads within the future subdivision of Lot 200, DP 1160705 at Huntview. These roads commence north off Pioneer Road.	Rawlings Street, Broomfield Street and Wright Close.



LINDY HYAM, General Manager, Singleton Council, PO Box 314, Singleton NSW 2330. [6637]

TEMORA SHIRE COUNCIL

Roads Act 1993, Section 162

Roads Renaming

NOTICE is hereby given that Temora Shire Council, pursuant to the abovementioned Act, has renamed the following roads within Temora Shire Council:

<i>Current Road Name/Location</i>	<i>New Road Name</i>
Bectric Hall Road, road north of Bectric Hall and east of Rannock Road to Jepson's Road.	Breust Road.
Coolamon Bectric Road, road south Tara Bectric Road to shire boundary.	Rannock Road.
Quandary Bectric Road, road north Tara Bectric Road to Burley Griffin Way. Burley Griffin Way to Old Wagga Road North.	Quandary Road.
Springdale Wallundry Road, road north from Burley Griffin Way, Springdale, to Milvale Road.	Wallundry Road.
Trigalong Sebastopol Road (North), road north from Wynd's Lane to Old Cootamundra Road.	Trigalong Road.
Trigalong Sebastopol Road (South), road South from Wynd's Lane to Goldfields Way.	Sebastopol Road.
Reefton Arianah Park Road, road east west Goldfields Way to Mary Gilmore Way.	Howards Road.

G. C. Lavelle, General Manager, Temora Shire Council, PO Box 262, Temora NSW 2666. [6638]

WENTWORTH SHIRE COUNCIL

Roads Act 1993, Section 162

Naming of Public Roads

NOTICE is hereby given that Wentworth Shire Council, pursuant to the abovementioned Act, has named the following roads located within Wentworth Shire Council.

<i>Suburb</i>	<i>Gazetted Road Name</i>
Anabran North	Popio Road
Anabran North	Windamingle Road
Anabran North/Scotia	Belvedere Road
Anabran South	Anabran Mail Road
Anabran South	Milkengay Road
Anabran South	Milpara Road
Anabran South/ Anabran North	Old Broken Hill Road
Anabran South/Anabran North/Pooncarie	Roo Roo Road
Anabran South/Rufus	Rufus River Road
Anabran South/Rufus	Tooperoopna Road
Arumpo	Gol Gol Road
Arumpo	Petro Mail Road
Arumpo/Pan Ban	Garnpang Road
Buronga	Ajuga Court
Buronga	Bridge Road
Buronga	Broadstock Court

<i>Suburb</i>	<i>Gazetted Road Name</i>	<i>Suburb</i>	<i>Gazetted Road Name</i>
Buronga	Caravan Park Road	Coomealla	Reserve Road West
Buronga	Carbone Court	Coomealla	Sandbar Road
Buronga	Casuarina Way	Coomealla	Scout Road
Buronga	Chapman Street	Coomealla	Seymour Road
Buronga	Churchill Street	Coomealla	Syphon Road
Buronga	Corbett Avenue	Coomealla	Tallawalla Road
Buronga	Crane Drive	Coomealla	Tilba Road
Buronga	Enterprise Way	Coomealla	Trawalla Road
Buronga	Friel Street	Coomealla	Twin Isles Drive
Buronga	Fuchsia Court	Coomealla	Werona Lane
Buronga	Grace Crescent	Coomealla	Yanco Road
Buronga	Hendy Road	Coomealla (Dareton)/	River Road
Buronga	Melaleuca Street	Mourquong	
Buronga	Midway Drive	Coomealla/Boeill Creek	Amaroo Road
Buronga	Modica Crescent	Coomealla/Boeill Creek	Boeill Creek Road
Buronga	Morris Place	Coomealla/Wentworth	Fletchers Lake Road
Buronga	Orana Crescent	Curlwaa	Acacia Road
Buronga	Pitman Avenue West	Curlwaa	Bamboo Road
Buronga	Pooley Street	Curlwaa	Billabong Road
Buronga	River Drive	Curlwaa	Box Tree Lane
Buronga	Rose Street	Curlwaa	Channel Road
Buronga	Rosedale Court	Curlwaa	Church Road
Buronga	Short Street	Curlwaa	Creek Lane
Buronga	Stamford Court	Curlwaa	Creek Road
Buronga	Summer Drive	Curlwaa	Gum Lane
Buronga	Tower Court	Curlwaa	Little Manly Lane
Buronga	Turner Avenue	Curlwaa	Manly Road
Buronga	West Road	Curlwaa	Memorial Road
Buronga/Gol Gol	Pitman Avenue	Curlwaa	Murray Road
Coomealla	Alba Road	Curlwaa	Olive Lane
Coomealla	Alexanders Lane	Curlwaa	Pikes Lane
Coomealla	Allomba Road	Curlwaa	Poplar Road
Coomealla	Bernarra Road	Curlwaa	Ryans Road
Coomealla	Boggabilla Road	Curlwaa	Short Lane
Coomealla	Bombala Road	Curlwaa	Syndicate Road
Coomealla	Boronia Crescent	Curlwaa	Wakefield Lane
Coomealla	Channel Road	Curlwaa	Williamsville Road
Coomealla	Citrus Drive	Dareton	Avoca Lane
Coomealla	Comebunjee Road	Dareton	Avoca Street
Coomealla	Coonah Road	Dareton	Belar Street
Coomealla	Cudgee Road	Dareton	Burra Road
Coomealla	Doogan Road	Dareton	Burtundy Street
Coomealla	Gunya Road	Dareton	Devenport Street
Coomealla	Hollands Lake Road	Dareton	Hawdon Street
Coomealla	Jacaranda Road	Dareton	Hawdon Lane
Coomealla	Jindalee Road	Dareton	Hume Street
Coomealla	Kardinia Road	Dareton	Kookaburra Drive
Coomealla	Maclachlans Lane	Dareton	Matong Street
Coomealla	Merindah Road	Dareton	Millie Street
Coomealla	Milpara Road	Dareton	Mitchell Avenue
Coomealla	Mulga Road	Dareton	Neilpo Street
Coomealla	Nentoura Road	Dareton	Riverview Drive
Coomealla	Oleander Drive	Dareton	School Road
Coomealla	Panaroo Road	Dareton	Sturt Place
Coomealla	Parraweena Road	Dareton	Tapio Street
Coomealla	Peppertree Lane	Dareton	Tiltao Street
Coomealla	Pump Station Road	Ellerslie	Smiths Road
Coomealla	Reserve Road East	Ellerslie/Wentworth	Ellerslie Road

<i>Suburb</i>	<i>Gazetted Road Name</i>	<i>Suburb</i>	<i>Gazetted Road Name</i>
Gol Gol	Alcheringa Drive	Pomona	Neilpo Road
Gol Gol	Alderton Drive	Pomona	Oxley Road
Gol Gol	Allen Court	Pomona	Pump Road
Gol Gol	Bligh Street	Pomona	River Road
Gol Gol	Burns Street	Pomona	Sturt Road
Gol Gol	Carramar Drive	Pomona	Willow Lane
Gol Gol	Dawn Avenue	Pomona	Wills Road
Gol Gol	Drings Way	Pomona	Yankabilly Road
Gol Gol	Fayes Lane	Pomona/Wentworth/Para	Low Darling Road
Gol Gol	Fiona Drive	Pooncarie	Cemetery Road
Gol Gol	Gol Gol North Road	Pooncarie	Darling Street
Gol Gol	John Street	Pooncarie	Gray Street
Gol Gol	Katrina Court	Pooncarie	Haverfield Street
Gol Gol	King Street	Pooncarie	Mallara Street
Gol Gol	Kingfisher Road	Pooncarie	Mckinlay Street
Gol Gol	Knights Road	Pooncarie	Minda Road
Gol Gol	Lauren Close	Pooncarie	North Street
Gol Gol	Mitchell Lane	Pooncarie	Old Pooncarie Road
Gol Gol	Modikerr Way	Pooncarie	Para Street
Gol Gol	Murray Street	Pooncarie	Polia Road
Gol Gol	Pamela Court	Pooncarie	Short Street
Gol Gol	Pine Road	Pooncarie	Tarcoola Street
Gol Gol	Potters Drive	Pooncarie	West Street
Gol Gol	Punt Road	Pooncarie/Arumpo	Top Hut Road
Gol Gol	Riverview Rise	Pooncarie/Moorara/ Pan Ban	Karpa Kora Road
Gol Gol	Robert Court	Pooncarie/Pan Ban	Ivanhoe Road
Gol Gol	Tapio Street	Rufus	Cal Lal Road
Gol Gol	The Cobb and Co Way	Rufus/Pine Camp	Nulla Road
Gol Gol	Wadsworth Drive	Scotia	Nanya Road
Gol Gol	Wilga Road	Trentham Cliffs	Alfred Elms Road
Gol Gol	Wilga Road South	Trentham Cliffs/Mallee	Dansons Road
Gol Gol	William Street	Wentworth	Adams Street
Gol Gol	Wood Street	Wentworth	Adelaide Street
Mallee	Old Euston Road	Wentworth	Alice Street
Mallee/Euston	Tapalin Mail Road	Wentworth	Armstrong Avenue
Monak	Bonnie Doon Road	Wentworth	Arrandale Lane
Monak	Keens Road	Wentworth	Arrandale Lane North
Mourquong	Buronga Hill Road	Wentworth	Arthur Street
Mourquong	Link Road	Wentworth	Berkeley Street
Mourquong	Mourquong Road	Wentworth	Beverley Street
Mourquong/Wentworth/	Arumpo Road	Wentworth	Burns Street
Arumpo		Wentworth	Cadell Street
Pan Ban	Dockerty Road	Wentworth	Cudmore Road
Pan Ban	Wilkurra Road	Wentworth	Darling Lane
Paringi	Paringi Road	Wentworth	Darling Street
Pine Camp	Pine Camp Road	Wentworth	Darling View Road
Pine Camp	Tarawi Road	Wentworth	Downham Road
Pine Camp/Scotia/	Springwood Road	Wentworth	Emily Street
Anabran North		Wentworth	Francis Street
Pomona	Bass Lane	Wentworth	Garston Road
Pomona	Burke Road	Wentworth	Gunn Street
Pomona	Channel Road	Wentworth	Helena Street
Pomona	Darling Road	Wentworth	Hospital Road
Pomona	Dunns Road	Wentworth	Jane Street
Pomona	Flinders Road	Wentworth	Lagoon Road
Pomona	Hume Road	Wentworth	Log Bridge Road
Pomona	Macquarie Road	Wentworth	Louisa Street
Pomona	Mitchell Road	Wentworth	McKinnon Drive

<i>Suburb</i>	<i>Gazetted Road Name</i>
Wentworth	Murray Court
Wentworth	Murray Street
Wentworth	Neville Street
Wentworth	Perry Street
Wentworth	Randell Street
Wentworth	Red Hill Road
Wentworth	Ruby Street
Wentworth	Ryder Crescent
Wentworth	Sandwyck Street
Wentworth	Shannon Street
Wentworth	Sheoak Lane
Wentworth	Short Street
Wentworth	Ski Reserve Road
Wentworth	Tuckers Lane
Wentworth	Wentworth Street
Wentworth	West Street
Wentworth	Wharf Street
Wentworth	Wilkes Street
Wentworth	William Street
Wentworth	William Street South
Wentworth	Wilmont Street
Wentworth/Anabranth South/ Rufus	Renmark Road
Wentworth/Arumpo/Para	Wamberra Road
Wentworth/Curlwaa	Delta Road
Wentworth/Curlwaa/ Coomoalla	Old Wentworth Road
Wentworth/Ellerslie	Ellerslie North Road
Wentworth/Para/Arumpo/ Pooncarie/Moorara	Pooncarie Road
Wentworth/Para/Pooncarie	High Darling Road
Wentworth/Para/Pooncarie	Nob Road
Wentworth/Pomona	Pomona Road
Wentworth	John Egge Lane

Authorised by resolution of Council on 20 June 2012.
PETER KOZLOWSKI, General Manager, Wentworth Shire
Council, PO Box 81, Wentworth NSW 2648. [6639]

WYONG SHIRE COUNCIL

Water Management Act 2000

Land Acquisition (Just Terms Compensation) Act 1991

Notice under Section 19 (1)

Notice of Compulsory Acquisition of Easement
for Water Pipeline

WYONG SHIRE COUNCIL (a water supply authority), with the approval of Her Excellency the Governor, with the advice of the Executive Council, declares that the interest in land described in Schedule A to this notice, is acquired by compulsory process in accordance with the provisions of the Land Acquisition (Just Terms Compensation) Act 1991.

Pursuant to section 318 (2) of the Water Management Act 2000, this acquisition is taken to be for an authorised work and Wyong Shire Council (a water supply authority), is taken to be the constructing authority for the purposes of the Public Works Act 1912. MICHAEL WHITTAKER, General Manager, Wyong Shire Council, PO Box 20, Wyong NSW 2259.

SCHEDULE A

An Easement in Gross for Water Supply 10 wide upon the terms provided in Schedule 4A of the Conveyancing Act 1919, affecting part of Lot 1, DP 715772, which is shown on DP 1163494 and therein designated "W" Proposed Easement for Water Pipeline 10 wide". [6640]

ESTATE NOTICES

NOTICE of intended distribution of estate. – Any person having any claim, including an application or notice of intended application for a family provision order, upon the estate of PATRICIA DORA MOORE, late of Peakhurst, in the State of New South Wales, retired physiotherapist, who died on 4 June 2012, must send particulars of the claim to the executor, Fiona Bernice Gibson, c.o. Colin J. Duff, Solicitor, 7 Morts Road, Mortdale NSW 2223, not more than 30 days after publication of this notice. After that time the legal personal representative intends to distribute the property in the estate having regard only to the claims affecting the estate of the deceased of which at the time of distribution the legal personal representative has notice. New South Wales grant made on 16 August 2012. COLIN J. DUFF, Solicitor, 7 Morts Road, Mortdale NSW 2223 (DX11307, Hurstville), ref CJD:2124994, tel.: (02) 9570 2022. [6641]

IN the Supreme Court of New South Wales, Sydney Registry, Probate Division. – Notice of intended distribution of estate of SUSIE JEAN ALLIES POWER, New South Wales Grant made 13 August 2012. – Any person having any claim upon the estate of Susie Jean Allies Power, late of Wollstonecraft, in the State of New South Wales, who died on 22 May 2012, must send particulars of the claim to the legal representative for the estate, care of David M. Carson, Lawyer, Level 5, 50 Park Street, Sydney NSW 2000, within 30 days from publication of this notice. After that time and after 6 months from the date of death of the deceased, the legal representative intends to distribute the property in the estate having regard only to the claims of which the legal representative had notice at the time of distribution. DAVID M. CARSON, Lawyer, Level 5, 50 Park Street, Sydney NSW 2000 (DX 1027, Sydney), tel.: (02) 9261 0334. [6642]

NOTICE of intended distribution of estate. – Any person having any claim, including an application or notice of intended application for a family provision order, upon the estate of JEAN RUTH RILEY, late of Kirrawee, in the State of New South Wales, widow, who died on 6 June 2012, must send particulars of the claim to the executor, Roger Alan Riley, c.o. Colin J. Duff, Solicitor, 7 Morts Road, Mortdale NSW 2223, not more than 30 days after publication of this notice. After that time the legal personal representative intends to distribute the property in the estate having regard only to the claims affecting the estate of the deceased of which at the time of distribution the legal personal representative has notice. New South Wales grant made on 16 August 2012. COLIN J. DUFF, Solicitor, 7 Morts Road, Mortdale NSW 2223 (DX11307, Hurstville), tel.: (02) 9570 2022. Reference: CJD:2124995. [6643]



Government Gazette

OF THE STATE OF
NEW SOUTH WALES

Number 87
Friday, 31 August 2012

Published under authority by the Department of Premier and Cabinet

PUBLIC SECTOR NOTICES

PUBLIC SECTOR EMPLOYMENT AND MANAGEMENT ACT 2002

CHIEF EXECUTIVE SERVICE

Appointment under Section 12

THE Public Service Commissioner, under delegation from the Premier and pursuant to the provisions of the Public Sector Employment and Management Act 2002, has appointed the officer listed below to the chief executive service position as specified:

Rural Fire Service

Mr Shane FITZSIMMONS, Commissioner [1 October 2012 to 30 September 2017].

The Hon. M. GALLACHER, M.L.C.,
Minister for Police and Emergency Services

ISSN 0155-6320

Authorised to be printed
TONY DUCKMANTON, Government Printer.